

Historic, archived document

Do not assume content reflects current scientific knowledge, policies, or practices.

1 9 3 6
**W H O L E S A L E
 C A T A L O G**

**G R I F F I N G
 N U R S E R I E S**
Beaumont, Texas



U. S. Department of Agriculture

RECEIVED
 ★ NOV 19 1935 ★

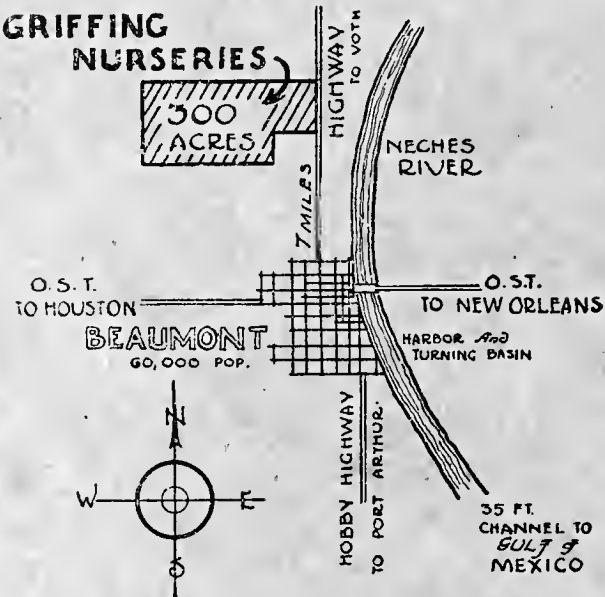
LANDSCAPE MATERIAL
 which is different

PINEAPPLE GUAVA
 WAXLEAF LIGUSTRUM
 YAUPON HOLLY
 LIVE OAKS
 PYRACANTHAS
 SYLVESTER JUNIPERS
 BLUE CEDARS
 NANDINAS
 MAGNOLIAS

AMERICAN HOLLY
 PFITZER JUNIPERS
 MYRTLES
 VIBURNUM
 PODOCARPUS
 CRAPE MYRTLES
 GARDENIAS
 ELAEAGNUS
 HARDY PALMS

TRADE CONFIDENCE — We protect our
 Wholesale Customers on their Retail
 clientage.

HOW TO REACH



OUR NURSERIES

Griffing's Terms . . .

TERMS: CASH All accounts are payable at Beaumont, Texas. Our terms are Cash with order, unless arrangements for time payments are made prior to each shipment.

CLAIMS: Any claims should be made upon receipt of the goods or within Five days. Complaints properly presented will be given special attention.

QUANTITY DISCOUNTS: We solicit Large orders, and as an inducement to Quantity purchases, offer the following schedule of Discounts from the printed prices:

4	%	Discount from orders which Net \$	25.00
6	%	Discount from orders which Net	50.00
8	%	Discount from orders which Net	100.00
10	%	Discount from orders which Net	250.00
12 ½	%	Discount from orders which Net	500.00
15	%	Discount from orders which Net	1000.00

RESERVE ORDERS: On large orders for Stock to be shipped at intervals in Car lots, we require a 25% Cash advance payment; or if booked and not reserved by cash payment, the Quantity discounts on large quantities cannot be allowed until last shipment is made.

NO AGENTS: We employ no agents, and no one is authorized to use our name. This Price List is intended for the TRADE only, and if it reaches people not entitled to Trade prices, we will thank any Nurseryman or Florist to advise us, that our Mailing List may be corrected.

ASSOCIATION MEMBERSHIP: To further the interest of the Nursery and Landscape Development, and keep posted on affairs of interest to the Trade, we maintain membership in the following Trade Associations:

American Association of Nurserymen
 Southwestern Association of Nurserymen
 Texas Association of Nurserymen
 Nurserymen's Co-operative Association
 Gulf Coast Horticultural Association
 Beaumont Floral and Nursery Association
 Beaumont Chamber of Commerce

HOW TO SHIP: We keep abreast with the best facilities for shipping and want to please our Customers for the safest Delivery. We can usually give good advice as to how it is best to ship and will gladly quote Rates, and make suggestions.

WHO PAYS THE FREIGHT: Shipments are made f. o. b. Nursery, (You paying the Freight). We load trucks and Carloads at Mt. Evergreen, Texas. Express and Less Carload shipments shipped from Beaumont, Texas.

FREIGHT PREPAID: We pay the Freight on Carload shipments where the "Less than Carload Rates" are applied, to any point of approximately 300 miles.

SPECIAL FREIGHT RATES: To many cities there are Special Freight Rates on B&B Nursery Stock, in addition to the few mentioned, as follows, applicable from Mt. Evergreen, Texas:

St. Louis, Missouri	.47½c	Corpus Christi, Texas	.35c
Memphis, Tennessee	.47½c	Dallas, Texas	.33c
Kansas City, Missouri	.47½c	Fort Worth, Texas	.35c
Oklahoma City, Oklahoma	.47½c	Laredo, Texas	.46c
Little Rock, Arkansas	.54 c	San Antonio, Texas	.33c
Shreveport, Louisiana	.38 c	Miami, Fla. (Steamship)	.69c
New Orleans, Louisiana	.33 c	Jacksonville, Fla. (Boat)	.69c
Harlingen, Texas	.46 c	Charleston, S. C. (Boat)	.69c

(Special rates effective and best routings will be quoted to your City upon application. Let us serve you!)

LARGE WHOLESALE PURCHASES

V S

SMALL WHOLESALE PURCHASES: In order to supply Fresh Dug stock according to Standardized Grading, and fill the requirements of each individual Customer, it is necessary to select and dig the Trees from the fields for each order. The carload orders, where more men are worked economically and the stock hauled direct to the Cars for loading, these orders can be handled cheaper per plant than on small orders. Refer to the Prices "per each" in Carlots for orders totaling a carlot shipment.

FOR LESS CARLOT orders, additional expense is involved in selecting and assembling small individual plants from the large fields, which requires extra expense of labor, etc.; therefore this stock is priced at the "Each Rate Prices". The cost may be a little more per plant, but you get the grade, size, quality and FRESH DUG stock each time.

GUARANTEE: We will replace any plants not true to name, or up to Grade and that do not arrive in good condition when it is delivered to Transportation Companies. All Carriers are responsible for any damage or injury in transit.

GRIFFING'S INSURANCE: Through our protection in handling B&B Nursery stock, we are willing to Insure or Guarantee our Trees to grow, provided our instructions are followed. While this is unusual for a Wholesale Nurseryman to do, we are so confident in the results our Stock will give, (having been grown in our Beaumont Soil, and handled the "Griffing Way") we do not hesitate to give this Unlimited Insurance. Should any stock fail to grow and our instructions are followed, we will replace the Trees FREE, f. o. b. our Nurseries.

STANDARDIZED GRADING

In our judgment, Standardized Grading is the only way to honestly Grade and Sell Nursery Stock. We offer for sale only our No. 1 Grade Stock, or Better; and hold our light No. 2 grade for growing over.

We use the Standardized System of Grading as adopted by the American Association of Nurserymen in 1923, and since revised to date. We have followed this System religiously since its adoption, and we are perhaps the only large Nursery in the South who do follow this System of Fair Grading.

GRADING SYSTEM BY X'S: Our many regular Customers know the Grading Standards used when we sell Nursery Stock. We give the following illustration to show what we mean by Grading by X's—all plants are the same height, but certainly there is a great difference in the general appearance and values:



XXX

XX

X

Griffing's Waxleaf Ligustrum illustrating Quality of plants. Wouldn't you prefer the XXX?

LISTING BY X'S EXPLAINED: The Standardized System uses the symbol of X's to indicate the Quality of Nursery Stock. Throughout our Catalog, you will see before the prices of each grade the Number of X's, which refers to the Quality, or general appearance of the Plant.

XX Means the plants are well developed, merchantable stock, but not the best of the species.

XXX is Heavy Specimens, well developed. (Listed in Catalog).

XXXX is Extra Heavy Specimens (A few grades catalogued).

X is Light or No. 2 Grade, not sold but grown over.

SPECIMEN STOCK selected or marked in the Nursery will be charged for according to this System or its actual values.

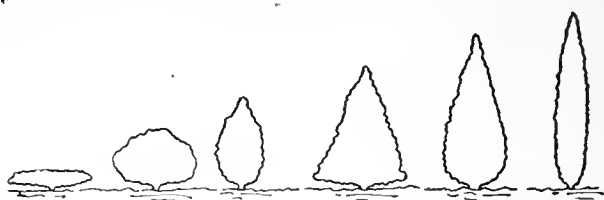
THE GRIFFING SQUARE DEAL—Use Standardized Grading System so those who come to the Nursery and those who do not come, get exact Quality of merchandise as they specify. If you come to the Nursery, you will see the different Quality, but those who don't come, can rely on the Quality being given them as they designate in ordering. (We do not approve of the old fashioned way of letting the Professional Buyers select the choice of the stock early in the Season at current prices and force the ones buying later to pay the same price for the culls.) The System of Quality gives the purchasers a fair opportunity to buy, and a Standard to order by without personally selecting his material to get a "Square Deal".



SYSTEM OF GRADE GROUPS

In this Catalog, we have shown whether Plants are graded by height or width, i.e. 18-24 in. ht. or 24-30 in. sprd. This indicates the class into which the particular Plant is placed. In order to know what Spread or Width a certain plant should be in proportion to its height, the following groups are used, the

same as adopted by the American Association of Nurserymen.



No. 1 No. 2. No. 3 No. 4. No. 5. No. 6.

GROUP No. 1. Spreading Type — Evergreens average width of spreading branches both ways.

GROUP No. 2. Semi-spreading Type — Evergreens should be as high as they are wide.

GROUP No. 3. Globe or Dwarf Type — Evergreens 24 in. high should be 12 in. wide.

GROUP No. 4. Cone Type — Evergreens 36 in. high should be 27 in. wide.

GROUP No. 5. Pyramidal Type — Evergreens 3 ft. high should be 1 ft. wide.

GROUP No. 6. Slender Type — Evergreens 5 ft. high should be 8 in. wide.

TO CORRECTLY MEASURE PLANTS, the measure of height should begin where the branches begin and stop where the main part of the top ends in their natural growing position, and not at the end of a thin "Shoot".

ROOT PRUNING and transplanting into Good Balling soil are necessary, and frequent pruning to make low branched and well filled-in Specimens.

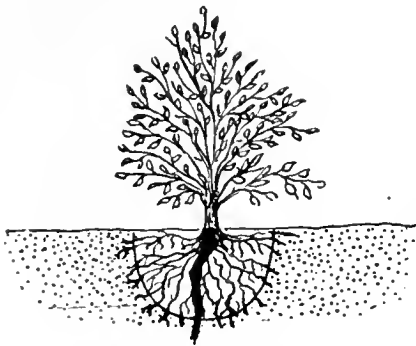
GRIFFING'S BEAUMONT BALLING SOIL: Our great success in transplanting Trees and Shrubs safely at all Seasons may be largely attributed to our Wonderful Balling soil. There is no other just like it. We have the soil that is "just right" for Balling and Burlapping. The Ball is spaded out in one solid piece, often compared to slicing a "piece of cheese". Note the solidness of the Ball in the illustration.



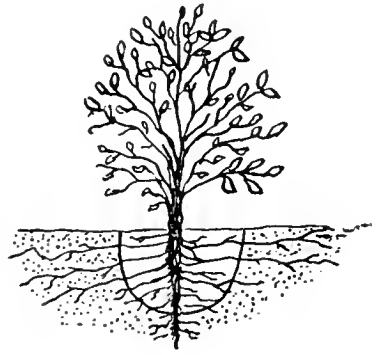
Our particular soil is known among Oil Company geologists as "BEAUMONT LOAM", peculiar only to this Section. It is rich and black, and when taken up in the form of a Ball, will not crack or crumble, and does not dissolve or "melt down" when set in water for weeks. To the contrary, that is the way to preserve it.

IRRIGATION is one of the facilities we appreciate most in the production of Quality Nursery Stock. Fresh River water can be applied through flood irrigation anytime of the year. In this way the plants never suffer of drouth, instead a compact root growth

is developed. No roots have to seek moisture for a long distance. The illustration shows the value of this in digging B&B Plants for transplanting and saving of root system.



**PLANTS GROWN ON
IRRIGATED LAND
LOSE 5% OF ROOTS**



**PLANTS GROWN ON
NON-IRRIGATED LAND
LOSE 40% OF ROOTS**

DIRECT PERSONAL MESSAGE FROM THE GRIFFINGS:

Although we have recently passed through one of the most trying periods of our business experience, and we have suffered in proportion with the many others; we do not wish to alter our aim to Serve our Customers with the Highest Quality Nursery Stock.

QUALITY NURSERY STOCK AND THE NAME "GRIFFING" have been associated together for nearly fifty years. To the Trade, as well as the public, GRIFFING'S TREES is known to mean the Best Quality, produced under the most adaptable conditions. It is with this same emblem of Quality that we aim to serve our old and new patrons.

The Highest Quality does not mean the Highest price—instead it is always the Cheapest. Our Nursery stock is a product you are proud to handle—it lives, it satisfies, and gives results. It comes from a Firm with a record of long tested values of Quality Production.

The Thousands of Customers using Griffing Quality products make it profitable for us to carry on. Their patronage is appreciated, and their satisfaction is expressed in such testimonials as:

"100% of our Plantings Lived and Grew"

"100% of our Customers are satisfied when Griffing Trees and Shrubbery are used"

"100% Profit is made on our orders where Griffing's Shrubbery is used".

Personal attention will be given your requirements any time. WE INVITE YOU TO VISIT US and see our NURSERY STOCK.

GRIFFING NURSERIES

Beaumont, Texas

**WALTER C. GRIFFING, and Son,
RALPH C. GRIFFING, Managers.**

DAY OR NIGHT PHONE—Beaumont 9043-F 2.

BROADLEAF EVERGREENS

In the whole southwest, there is no finer collection of Broadleaf Evergreens for general Landscape plantings than found in our Nurseries. We recommend greater use of these choice shrubs for foundation plantings, which range in color and type of growth to include dark green, light green reddened shades, and brightly colored berried species; all of which blend beautifully in the art of Landscaping.

ABELIA

GLOSSY

Abelia grandiflora

Attractive small growing Evergreen, dark green glossy leaves, pinkish-white flowers.

		Price Ea. Less Car lots	Price Ea. In Car lots
18-24 in. ht.	B&B XX	\$.80	\$.70
24-30 in. ht.	B&B XX	1.00	.85
24-30 in. ht.	B&B XXX	1.25	1.00
30-36 in. ht.	B&B XX	1.25	1.00
30-36 in. ht.	B&B XXX	1.55	1.25
36-42 in. ht.	B&B XX	1.70	1.30
36-42 in. ht.	B&B XXX	2.10	1.65

AZALEA

FORMOSA

Azalea indica formosa

Beautiful Evergreen shrub which has masses of brilliant purple-pink flowers in early Spring. This very hardy type thrives wonderfully in the out-of-doors.

		Price Ea. Less Car lots	Price Ea. In Car lots
12-15 in. sprd.	B&B XX	\$ 1.20	\$.95
15-18 in. sprd.	B&B XX	2.00	1.50
18-24 in. sprd.	B&B XX	2.50	2.00
36-42 in. sprd.	B&B XXX	6.75	5.50
42-48 in. sprd.	B&B XXX	8.75	6.75
42-48 in. sprd.	B&B XXXX	12.00	9.50
48-54 in. sprd.	B&B XXX	12.00	9.50
48-54 in. sprd.	B&B XXXX	15.00	12.00
54-60 in. sprd.	B&B XXX	15.00	12.00
54-60 in. sprd.	B&B XXXX	19.00	15.00
5- 6 ft. sprd.	B&B XXX	19.00	15.00

BARBERRY

AGERITA

Berberis trifoliata

Attractive evergreen foliage similar to the Holly, and bears brilliant berries in Winter. Slow growing and compact growth.

		Price Ea. Less Car lots	Price Ea. In Car lots
12-15 in. ht.	B&B XX	\$.80	\$.70
15-18 in. ht.	B&B XX	.90	.80
18-24 in. ht.	B&B XX	1.25	1.00
18-24 in. ht.	B&B XXX	1.50	1.25
24-30 in. ht.	B&B XX	1.50	1.25
24-30 in. ht.	B&B XXX	2.00	1.60
30-36 in. ht.	B&B XX	2.00	1.60
30-36 in. ht.	B&B XXX	2.50	2.00
3- 4 ft. ht.	B&B XX	2.50	2.00
4- 5 ft. ht.	B&B XX	3.50	2.75

REDLEAF

Berberis thunbergi atropurpurea

Brilliant red foliage in the Winter months with scarlet berries. Low growing type and very attractive for decorative purposes.

		Price Ea. Less Car lots	Price Ea. In Car lots
12-15 in. ht.	B&B XX	\$.85	\$.65
15-18 in. ht.	B&B XX	1.00	.80
18-24 in. ht.	B&B XX	1.20	.95
18-24 in. ht.	B&B XXX	1.50	1.25
24-30 in. ht.	B&B XX	1.50	1.25

CAMELLIA

CAMELLIA JAPONICA

Camellia japonica

A beautiful shrub with dark glossy green foliage, with large waxy colorful blooms in the early Spring season. This shrub is rare and very slow growing, producing abundance of flowers each Season. FOR RARE and SPECIFIC COLORS, quotations given on request!

		Price Ea. Less Car lots	Price Ea. In Car lots
36-42 in. ht.	B&B XX	\$ 5.50	\$ 4.75
36-42 in. ht.	B&B XXX	7.25	6.00
42-48 in. ht.	B&B XX	7.25	6.00
42-48 in. ht.	B&B XXX	9.00	7.50
42-48 in. ht.	B&B XXXX	14.50	12.00

		Price Ea. Less Car lots	Price Ea. In Car lots
4- 5 ft. ht.	B&B XX	9.00	7.50
4- 5 ft. ht.	B&B XXX	14.00	12.00
4- 5 ft. ht.	B&B XXXX	22.50	18.00
5- 6 ft. ht.	B&B XX	14.00	12.00
5- 6 ft. ht.	B&B XXX	22.50	18.00
5- 6 ft. ht.	B&B XXXX	29.00	25.00

CAMPHOR

CAMPHOR TREE

Cinnamomum camphora

Rich green foliage, changing in seasons to wine, or bronze color, bushy or shaped to suit most any location.

4-5 ft. ht.	B&B XX	\$ 1.25	\$ 1.00
5-6 ft. ht.	B&B XX	2.00	1.50
5-6 ft. ht.	B&B XXX	2.50	2.00
6-7 ft. ht.	B&B XX	2.50	2.00
6-7 ft. ht.	B&B XXX	3.50	3.00
7-8 ft. ht.	B&B XX	3.50	3.00
7-8 ft. ht.	B&B XXX	5.00	4.00
8-9 ft. ht.	B&B XX	5.00	4.00
8-9 ft. ht.	B&B XXX	6.25	5.00

CAPE JASMINE

FLORIDA

Gardenia grandiflora

Blooms only in the early Spring season; however the flowers are larger than Fortunci. Very attractive as Shrub with glossy green foliage, large white waxy sweet scented blooms in Spring Season.

12-18 in. ht.	B&B XX	\$.50	\$.40
18-24 in. ht.	B&B XX70	.60
24-30 in. ht.	B&B XX90	.75
24-30 in. ht.	B&B XXX	1.10	.90
30-36 in. ht.	B&B XX	1.10	.90
30-36 in. ht.	B&B XXX	1.50	1.20
36-42 in. ht.	B&B XX	1.50	1.20
36-42 in. ht.	B&B XXX	1.80	1.40
42-48 in. ht.	B&B XX	1.80	1.40
42-48 in. ht.	B&B XXX	2.25	1.60
4- 5 ft. ht.	B&B XX	2.25	1.60
4- 5 ft. ht.	B&B XXX	3.00	2.50



Gardenia dug Balled (B&B) to hold its leaves and flowers.

JASMINE (Cont.)

FORTUNE "Everblooming" *Gardenia fortunei*

This is the *Gardenia* so much in demand over the entire country. It has dark green foliage, beautiful white sweet scented flowers in the Spring and at intervals during the Summer. It is more hardy than Common types. Shrubs transplanted from our soil do not lose their leaves, but continue blossoming after planting.

		Price Ea. Less Car lots	Price Ea. In Car lots
18-24 in. ht.	B&B XX	\$ 1.10	\$.80
18-24 in. ht.	B&B XXX	1.25	1.00
24-30 in. ht.	B&B XX	1.25	1.00
24-40 in. ht.	B&B XXX	1.75	1.25
30-36 in. ht.	B&B XX	1.75	1.25
30-36 in. ht.	B&B XXX	2.25	1.75
36-42 in. ht.	B&B XX	2.25	1.75
36-42 in. ht.	B&B XXX	2.75	2.00
42-48 in. ht.	B&B XX	2.75	2.00
42-48 in. ht.	B&B XXX	3.50	2.75
4- 5 ft. ht.	B&B XX	3.50	2.75
4- 5 ft. ht.	B&B XXX	4.35	3.50

DWARF SPREADING

Gardenia radicans prostrata nana

Very low growing shrub with tiny green leaves, with minute *Gardenia* blossoms in the Spring and Summer season.

18-24 in. sprd.	B&B XX	\$ 1.25	\$ 1.00
18-24 in. sprd.	B&B XXX	1.50	1.25
24-30 in. sprd.	B&B XX	1.50	1.25
24-30 in. sprd.	B&B XXX	1.85	1.50
30-36 in. sprd.	B&B XX	1.85	1.50
30-36 in. sprd.	B&B XXX	2.25	1.80
36-42 in. sprd.	B&B XX	2.25	1.80
36-42 in. sprd.	B&B XXX	2.80	2.25

VEITCHI

Gardenia radicans nana

Similar to Dwarf type, Semi-dwarf type, slightly upright in growth. Blossoms same, however plants will withstand more cold than Dwarf type.

24-30 in. sprd.	B&B XX	\$ 1.50	\$ 1.20
24-30 in. sprd.	B&B XXX	1.85	1.50
30-36 in. sprd.	B&B XX	1.85	1.50
30-36 in. sprd.	B&B XXX	2.25	1.85
36-42 in. sprd.	B&B XX	2.25	1.85
36-42 in. sprd.	B&B XXX	2.80	2.25
42-48 in. sprd.	B&B XX	2.80	2.25
42-48 in. sprd.	B&B XXX	3.75	3.00

ELAEAGNUS

BROADLEAF

Elaeagnus macrophylla

Very broad foliage, light green with silvery color underneath, new growth and stems fawn colored. Medium growth, compact form. Cutting grown.

FRUITLAND

Elaeagnus fruitlandi

Edible fruit about $\frac{3}{4}$ inches long, and $\frac{3}{8}$ inches through. Broad pointed leaves, dark green with silvery color underneath. Cutting grown.

SIMON

Elaeagnus pungens simoni

Small dark green foliage dotted with silver scales and underneath a silvery color. Younger foliage fawn colored, very desirable for the best Landscape. Cutting grown.

24-30 in. ht.	B&B XX	\$ 1.20	\$ 1.00
24-30 in. ht.	B&B XXX	1.50	1.25
30-36 in. ht.	B&B XX	1.50	1.25
30-36 in. ht.	B&B XXX	2.00	1.50
3- 4 ft. ht.	B&B XX	2.00	1.50
3- 4 ft. ht.	B&B XXX	2.50	2.00
4- 5 ft. ht.	B&B XX	2.50	2.00
4- 5 ft. ht.	B&B XXX	3.00	2.50
5- 6 ft. ht.	B&B XX	3.00	2.50

ELAEAGNUS (Cont.)

BRONZE

Elaeagnus pungens reflexa

Large leaves which are dark green on upper surface, brownish mottled underneath. Very fast growing, spreading habit, sending out very long shoots.

		Price Ea. Less Car lots	Price Ea. In Car lots
5-6 ft. ht.	B&B XX	\$ 1.90	\$ 1.50
6-7 ft. ht.	B&B XX	2.40	2.00

DWARF THORNY

Elaeagnus pungens nana

Branches, unusually spiny; leaves shaped like a Live Oak leaf, silver white underneath. Very slow growing, compact dwarf type.

24-30 in. ht.	B&B XX	\$ 1.00	\$.75
30-36 in. ht.	B&B XX	1.20	1.00
30-36 in. ht.	B&B XXX	1.50	1.25
3- 4 ft. ht.	B&B XX	1.50	1.25
3- 4 ft. ht.	B&B XXX	2.50	2.00
4- 5 ft. ht.	B&B XX	2.50	2.00
4- 5 ft. ht.	B&B XXX	3.00	2.50

GRIFFING'S COMPACT

Elaeagnus Griffing's compacta

A very compact grower, brilliant green foliage on upper surface, mottled brownish color below. These plants of cutting growth and very choice.

12-18 in. ht.	B&B XX	\$ 1.00	\$.75
18-24 in. ht.	B&B XX	1.20	1.00
24-30 in. ht.	B&B XX	1.50	1.25
24-30 in. ht.	B&B XXX	1.75	1.50
30-36 in. ht.	B&B XX	1.75	1.50
30-36 in. ht.	B&B XXX	2.25	1.75

EUONYMUS

SPREADING

Euonymus colorata

Creeping evergreen with long narrow leaves, tinged with purple in Fall.

WINTERBERRY

Euonymus bunganus

More compact growing, low spreading bush with dark green leaves usually remaining all Winter. Bright scarlet berries. Fine for low plantings.

12-18 in. ht.	NB XX	\$.20	\$.15
18-24 in. ht.	NB XX	.30	.20
18-24 in. ht.	B&B XX	.45	.30
24-30 in. ht.	B&B XX	.50	.40
24-30 in. ht.	B&B XXX	.60	.50
30-36 in. ht.	B&B XX	.60	.50
30-36 in. ht.	B&B XXX	.75	.60
36-42 in. ht.	B&B XX	.75	.60
42-48 in. ht.	B&B XX	1.00	.75

FIRETHORN

LALAND (Burning Bush)

Pyracantha lalandi

"Evergreen Hawthorn" Tall upright type of Pyracantha which bears bright colored orange-yellow berries in profusion during Fall and Winter. These sturdy shrubs transplant with absolute success from our field grown stock, which is dug B&B from good Balling soil.

24-30 in. ht.	B&B XX	\$.85	\$.70
30-36 in. ht.	B&B XX	.90	.80
3- 4 ft. ht.	B&B XX	1.50	1.10
4- 5 ft. ht.	B&B XX	2.30	1.60
4- 5 ft. ht.	B&B XXX	2.75	2.00
5- 6 ft. ht.	B&B XX	2.75	2.00
5- 6 ft. ht.	B&B XXX	3.75	2.50
6- 7 ft. ht.	B&B XX	3.75	2.50
6- 7 ft. ht.	B&B XXX	4.50	3.25
7- 8 ft. ht.	B&B XX	4.50	3.25
7- 8 ft. ht.	B&B XXX	6.00	4.50

FIRETHORN (Cont.)**NEPAL*****Pyracantha crenulata***

A tall growing type with evergreen foliage and lemon-yellow berries in Fall and Winter.

		Price Ea. Less Car lots	Price Ea. In Car lots
5-6 ft. ht.	B&B XX	\$ 3.00	\$ 2.00
6-7 ft. ht.	B&B XX	3.90	2.75
7-8 ft. ht.	B&B XX	4.80	3.50

SCARLET***Pyracantha coccinea***

Low spreading growth, small glossy green foliage, with bright scarlet berries in the Fall and Winter Seasons.

2-3 ft. ht.	B&B XX	\$ 1.10	\$. .75
3-4 ft. ht.	B&B XX	1.40	1.00
4-5 ft. ht.	B&B XX	2.00	1.50
4-5 ft. ht.	B&B XXX	2.80	2.00

YONNANESE***Pyracantha yunnanensis***

Vigorous grower, large dark green foliage and a bright red berried shrub all Winter Season. Grows into a spreading massive shrub. Transplants good from our Balling soil.

4-5 ft. sprd.	B&B XX	\$ 2.30	\$ 1.50
5-6 ft. sprd.	B&B XX	3.00	2.00
5-6 ft. sprd.	B&B XXX	3.75	2.50
6-7 ft. sprd.	B&B XX	3.90	2.60
6-7 ft. sprd.	B&B XXX	4.90	3.25

GUAVA**PINEAPPLE*****Feijoa sellowiana***

Dandy broadleaf, bushy growing shrub which has an outstanding value in Landscaping. Its blue-gray foliage is very attractive, besides its attractive red blossoms in the Spring, followed by edible fruit.

18-24 in. ht.	B&B XX	\$ 1.00	\$.75
24-30 in. ht.	B&B XX	1.25	1.00
24-30 in. ht.	B&B XXX	1.50	1.25
30-36 in. ht.	B&B XX	1.50	1.25
30-36 in. ht.	B&B XXX	2.25	1.50
36-42 in. ht.	B&B XX	2.25	1.50
36-42 in. ht.	B&B XXX	2.75	2.00
42-48 in. ht.	B&B XX	2.75	2.00
42-48 in. ht.	B&B XXX	3.75	2.50
4- 5 ft. ht.	B&B XX	3.75	2.50
4- 5 ft. ht.	B&B XXX	4.50	3.50

HOLLY**AMERICAN (Berried)*****Ilex opaca***

A hardy type of Evergreen Holly with rounded, glossy dark rich green leaves, very spiny. Bears masses of brilliant scarlet berries in Winter.

DAHOON (Berried)***Ilex cassine***

A new type of Holly of Chinese origin, very hardy with glossy dark green leaves similar to pin oak in shape and color, not spiny. Bears brilliant red berries in Winter.

NARROWLEAF DAHOON (Berried) *Ilex myrtifolia*

Very attractive with its tiny narrow dark green foliage and clusters of orange, red and yellow berries in Fall and Winter. A new type of this Section and very adaptable to conditions of the Native Holly.

PRICE OF BERRIED OR PISTILLATE HOLLY ABOVE:

5- 6 ft. ht.	B&B XX	\$ 6.00	\$ 4.75
5- 6 ft. ht.	B&B XXX	7.50	5.75
6- 7 ft. ht.	B&B XX	7.50	5.75
6- 7 ft. ht.	B&B XXX	9.50	7.75
7- 8 ft. ht.	B&B XX	9.50	7.75
7- 8 ft. ht.	B&B XXX	11.50	9.50
8-10 ft. ht.	B&B XX	11.50	9.50
8-10 ft. ht.	B&B XXX	14.00	11.50
10-12 ft. ht.	B&B XX	14.00	11.50

HOLLY (Cont.)

PRICE OF NOT-BERRIED OR STAMINATE HOLLY ABOVE:		Price	Price
		Ea. Less	Ea. In
		Car lots	Car lots
5- 6 ft. ht.	B&B XX	\$ 4.00	\$ 3.25
5- 6 ft. ht.	B&B XXX	5.00	3.75
6- 7 ft. ht.	B&B XX	5.00	3.75
6- 7 ft. ht.	B&B XXX	6.10	4.80
7- 8 ft. ht.	B&B XX	6.10	4.80
7- 8 ft. ht.	B&B XXX	7.50	5.85
8-10 ft. ht.	B&B XX	7.50	5.85
8-10 ft. ht.	B&B XXX	9.50	7.50
10-12 ft. ht.	B&B XX	9.50	7.50

DECIDUOUS (Berried)

Ilex decidua

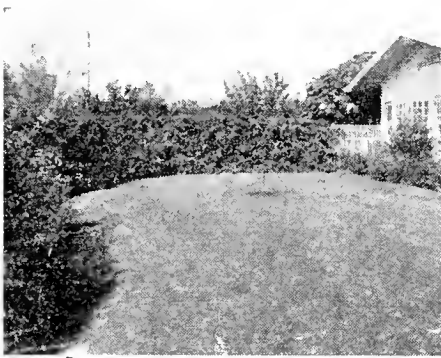
Very similar in appearance to Yaupon, however is more upright growing and loses its foliage during the Winter season. Bears masses of bright red berries in Fall.

PRICE OF BERRIED OR PISTILLATE HOLLY ABOVE:

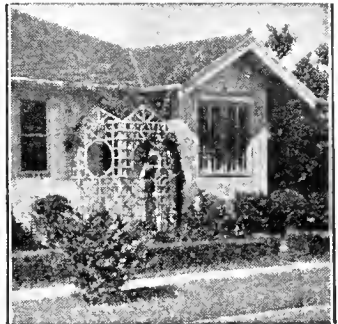
4-5 ft. ht.	B&B XX	\$ 1.90	\$ 1.50
5-6 ft. ht.	B&B XX	2.60	1.90
5-6 ft. ht.	B&B XXX	3.40	2.60
6-7 ft. ht.	B&B XX	3.40	2.60

PRICE OF NOT-BERRIED OR STAMINATE HOLLY ABOVE:

4-5 ft. ht.	B&B XX	\$ 1.25	\$ 1.00
5-6 ft. ht.	B&B XX	1.75	1.40
6-7 ft. ht.	B&B XX	2.30	1.80



Yaupon Holly used as an attractive evergreen border Hedge.



Dwarf growing type of the Yaupon Holly makes attractive low evergreen hedges.

YAUPON (Berried)

Ilex vomitoria

This is a very compact type of the Holly, with small dark glossy green leaves, which is very adaptable for use as a shrub, hedge or Tree. We have a large assortment of these fine specimens, offered in Berried and Not Berried species.

PRICE OF BERRIED OF PISTILLATE HOLLY ABOVE:

		Price	Price
		Ea. Less	Ea. In
		Car lots	Car lots
15-18 in. ht.	B&B XX	\$1.30	\$.90
18-24 in. ht.	B&B XX	1.50	1.10
18-24 in. ht.	B&B XXX	1.75	1.25
24-30 in. ht.	B&B XX	1.75	1.25
24-30 in. ht.	B&B XXX	2.50	1.75
30-36 in. ht.	B&B XX	2.50	1.75
30-36 in. ht.	B&B XXX	3.00	2.25
36-42 in. ht.	B&B XX	3.00	2.25
36-42 in. ht.	B&B XXX	3.50	2.75
42-48 in. ht.	B&B XX	3.50	2.75
42-48 in. ht.	B&B XXX	4.50	3.50
4- 5 ft. ht.	B&B XX	4.50	3.50
4- 5 ft. ht.	B&B XXX	6.00	4.50
5- 6 ft. ht.	B&B XX	6.00	4.50
5- 6 ft. ht.	B&B XXX	7.50	6.00

SHEARED SPECIMENS PRICED ONE GRADE HIGHER!

PRICE OF NOT-BERRIED OR STAMINATE HOLLY ABOVE:

We recommend planting one to every four or five Berried plants for cross-pollinization.

15-18 in. ht.	B&B XX	\$.85	\$.70
18-24 in. ht.	B&B XX	1.00	.80
18-24 in. ht.	B&B XXX	1.25	1.00
24-30 in. ht.	B&B XX	1.25	1.00

HOLLY (Cont.)

		Price Ea. Less Car lots	Price Ea. In Car lots
24-30 in. ht.	B&B XXX	1.75	1.25
30-36 in. ht.	B&B XX	1.75	1.25
30-36 in. ht.	B&B XXX	2.50	1.75
36-42 in. ht.	B&B XX	2.50	1.75
36-42 in. ht.	B&B XXX	3.00	2.25
42-48 in. ht.	B&B XX	3.00	2.25
42-48 in. ht.	B&B XXX	3.50	2.75
4- 5 ft. ht.	B&B XX	3.50	2.75
4- 5 ft. ht.	B&B XXX	4.50	3.50
5- 6 ft. ht.	B&B XX	4.50	3.50
5- 6 ft. ht.	B&B XXX	6.00	4.50

SHEARED SPECIMENS PRICED ONE GRADE HIGHER!
(Offered in Globe and Square Shapes, also Pyramids).

JASMINE**FLORIDA****(Italian Jasmine) (Humile) *Jasminum floridum***

Low growing, compact spreading shrub with fine small light green foliage, leaves alternate on stem, bearing small yellow flowers all Summer. Very fine for low foreground shrubs.

PRIMROSE***Jasminum primulinum***

Very graceful shrub, medium size green leaves, opposite on stem, bright yellow flowers only in Early Spring.

WINTER***Jasminum nudiflorum***

Medium size leaves, opposite on stem, yellow flowers, which come out before the leaves are put on in the Spring.

12-15 in. ht.	NB XX ¹	\$.30	\$.20
15-18 in. ht.	NB XX	.40	.30
18-24 in. ht.	NB XX	.50	.40
24-30 in. ht.	NB XX	.60	.50
15-18 in. ht.	B&B XX	.55	.45
18-24 in. ht.	B&B XX	.65	.55
24-30 in. ht.	B&B XX	.75	.65
24-30 in. ht.	B&B XXX	.90	.75
30-36 in. ht.	B&B XX	.90	.75
30-36 in. ht.	B&B XXX	1.25	1.00
3- 4 ft. ht.	B&B XX	1.25	1.00
3- 4 ft. ht.	B&B XXX	1.50	1.25
4- 5 ft. ht.	B&B XX	1.50	1.25
4- 5 ft. ht.	B&B XXX	1.80	1.50

LAUREL**CHERRY LAUREL (Wild Peach)*****Laurocerasus caroliniana***

Glistening bright green foliage, upright growth, attaining considerable height. Can be shaped to any desired form. One of the most beautiful Evergreens, white plume-like blossoms in the Spring.

4- 5 ft. ht.	B&B XX	\$ 2.00	\$ 1.75
5- 6 ft. ht.	B&B XX	2.60	2.25
5- 6 ft. ht.	B&B XXX	3.50	3.00
6- 7 ft. ht.	B&B XX	3.50	3.00
6- 7 ft. ht.	B&B XXX	5.00	4.00
7- 8 ft. ht.	B&B XX	5.00	4.00
7- 8 ft. ht.	B&B XXX	7.00	6.00
8- 9 ft. ht.	B&B XX	7.00	6.00
8- 9 ft. ht.	B&B XXX	9.50	7.50
9-10 ft. ht.	B&B XX	9.50	7.50

LAVENDER**COTTON*****Santolina chamaecyparis***

A low growing, very compact greyish-colored shrub for hedging or border purposes.

ROSEMARY***Rosmarinus officinalis***

Another low shrub with greyish foliage singled leaves, small blue flowers. Has medicated value in its foliage.

6- 9 in. sprd.	B&B XX	\$.35	\$.30
9-12 in. sprd.	B&B XX	.45	.35
12-15 in. sprd.	B&B XX	.50	.40

LOQUAT

JAPANESE (Japanese Plum)

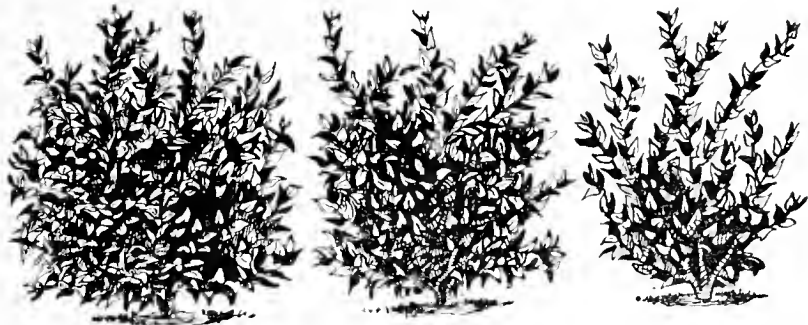
Eriobotrya

Large leaf, prickly-edged light green, creamy underneath. Delicious golden fruit, ripening in Early Spring.

		Price	Price
		Ea. Less	Ea. In
		Car lots	Car lots
5-6 ft. ht.	B&B XX	\$ 3.75	\$ 3.00
5-6 ft. ht.	B&B XXX	5.00	4.00
6-7 ft. ht.	B&B XX	5.00	4.00
6-7 ft. ht.	B&B XXX	6.50	5.25

LIGUSTRUMS (Privet)

This group of Broadleaf evergreens include a most choice selection, some of which we have originated and introduced on the market. We value this assortment very highly for the Southwest plantings. Notice the assortment and choose your variety to suit the place desired in the planting.



XXX, XX, X—Griffing's Waxleaf Ligustrum illustrated according to Quality.

BLACKLEAF PRIVET

Ligustrum lucidum nigrafolium

The most hardy of this group, is semi-spreading and rich green, almost black-green foliage, very thick and glossy. Withstands temperature where other types lose their foliage.

CRINKELYLEAF PRIVET

Ligustrum lucidum recurvifolium

Especially attractive with its medium size pointed and distinctively twisted leaves, giving a crinkled effect. Rich green foliage, medium upright growth.

GRIFFING'S WAXLEAF PRIVET

Ligustrum Lucidum compactum

Always call for "Griffing's Waxleaf", it's different than the usual "Lucidum" offered in substitute. This variety has highly glossed dark green foliage, thick and waxy. Compact growing type.

NEPAL PRIVET

Ligustrum lucidum nepalense

Very compact spreading growth with thick straight foliage, slightly lighter green, desired for its contrasting arching effect in plantings.

		Price	Price
		Ea. Less	Ea. In
		Car lots	Car lots
18-24 in. ht.	B&B XX	\$.75	\$.65
24-30 in. ht.	B&B XX	.90	.75
24-30 in. ht.	B&B XXX	1.20	.90
30-36 in. ht.	B&B XX	1.20	.90
30-36 in. ht.	B&B XXX	1.50	1.10
36-42 in. ht.	B&B XX	1.50	1.10
36-42 in. ht.	B&B XXX	1.80	1.25
42-48 in. ht.	B&B XX	1.80	1.25
42-48 in. ht.	B&B XXX	2.50	1.75
4- 5 ft. ht.	B&B XX	2.50	1.75
4- 5 ft. ht.	B&B XXX	3.50	2.50
5- 6 ft. ht.	B&B XX	3.50	2.50
5- 6 ft. ht.	B&B XXX	5.00	3.50

CHINESE PRIVET (Amur River South)

Ligustrum sinensis

Small leaf, light green color. Small white flowers.

PRIVET (Cont.)

JAPANESE PRIVET **Ligustrum japonicum**
Very large leaf type, rapid growing. Rich green foliage.

QUIHOUI PRIVET "Everblooming" **Ligustrum quihoui**
Medium green, small leaves and blooms throughout the entire season. Makes very dense growth.

		Price Ea. Less Car lots	Price Ea. In Car lots
3-4 ft. ht.	B&B XX	\$.65	\$.45
3-4 ft. ht.	B&B XXX	.80	.55
4-5 ft. ht.	B&B XX	.80	.55
4-5 ft. ht.	B&B XXX	1.10	.70
5-6 ft. ht.	B&B XX	1.10	.75
5-6 ft. ht.	B&B XXX	1.50	1.00
6-7 ft. ht.	B&B XX	1.50	1.00

BIGBERRY PRIVET **Ligustrum japonicum macrocarpum**
Upright growing, large leaves, changing from dark green to bronze in Autumn. Fine for screen plantings.

GRACEFUL PRIVET **Ligustrum lucidum gracilis**
Rich dark, black-green, medium growth, recurving branches with very graceful effect.

PYRAMID PRIVET **Ligustrum lucidum pyramidalis**
Most upright grower, has dark green leaves. Most hardy of the Lucidums, small white blooms in Spring.

UPRIGHT PRIVET **Ligustrum lucidum erecta**
All branches grow in upright position. Dark glossy foliage. Very graceful in manner of growth.

WEeping CHINESE PRIVET **Ligustrum sinensis prostrata**
Small light green foliage, very graceful weeping branches. Blooms heavily with masses of white flowers.

YELLOWLEAF PRIVET **Ligustrum japonicum aurea folium**
Large golden yellow leaves which make it an accent in groups of green shrubs. Very upright form of growth.

3-4 ft. ht.	B&B XX	\$.90	\$.57
3-4 ft. ht.	B&B XXX	1.20	.90
4-5 ft. ht.	B&B XX	1.20	.90
4-5 ft. ht.	B&B XXX	1.50	1.10
5-6 ft. ht.	B&B XX	1.50	1.10
5-6 ft. ht.	B&B XXX	2.00	1.50
6-7 ft. ht.	B&B XX	2.00	1.50
6-7 ft. ht.	B&B XXX	3.00	2.30
7-8 ft. ht.	B&B XX	3.00	2.30

MAGNOLIA

SOUTHERN **Magnolia grandiflora**
Bright shining green leaves, very large, usually coated with brownish substance underneath. Has large waxy flowers, very fragrant and showy. Both BUSHY and STANDARD types of these are offered below, please state which you desire.

PRICE OF BUSHY OR BRANCHED MAGNOLIAS:

3- 4 ft. ht.	B&B XX	\$ 1.50	\$ 1.20
4- 5 ft. ht.	B&B XX	2.00	1.50
5- 6 ft. ht.	B&B XX	2.80	2.00
5- 6 ft. ht.	B&B XXX	3.50	2.50
6- 7 ft. ht.	B&B XX	3.50	2.50
6- 7 ft. ht.	B&B XXX	5.00	4.00
7- 8 ft. ht.	B&B XX	5.00	4.00
7- 8 ft. ht.	B&B XXX	7.50	6.00
8- 9 ft. ht.	B&B XX	7.50	6.00
8- 9 ft. ht.	B&B XXX	9.50	7.50
9-10 ft. ht.	B&B XX	9.50	7.50
9-10 ft. ht.	B&B XXX	12.00	9.50
10-12 ft. ht.	B&B XX	12.00	9.50
10-12 ft. ht.	B&B XXX	15.00	12.00
12-14 ft. ht.	B&B XX	15.00	12.00
12-14 ft. ht.	B&B XXX	19.00	15.00

MAGNOLIA (Cont.)

		Price Ea. Less Car lots	Price Ea. In Car lots
PRICES OF SINGLE STEM, UNIFORM TOP MAGNOLIAS:			
4- 5 ft. ht.	B&B XX	\$ 1.50	\$ 1.25
5- 6 ft. ht.	B&B XX	2.00	1.50
6- 7 ft. ht.	B&B XX	2.80	2.00
7- 8 ft. ht.	B&B XX	3.90	3.00
8- 9 ft. ht.	B&B XX	5.50	4.50
9-10 ft. ht.	B&B XX	7.50	6.00
10-12 ft. ht.	B&B XX	9.50	7.50
12-14 ft. ht.	B&B XX	12.00	9.50

SWEET BAY MAGNOLIA

Magnolia glauca

Very graceful tree with large green leaves, silvery underneath. Small waxy white flowers.

RED BAY

Persea borbonia

Smooth branches, oblong leaves, glaucous underneath.

8- 9 ft. ht.	B&B XX	\$ 5.50	\$ 4.50
9-10 ft. ht.	B&B XX	7.50	6.00
10-12 ft. ht.	B&B XX	9.50	7.50

BANANA SHRUB

Magnolia fuscata

Beautiful evergreen shrub, producing yellowish-white small flowers of delightful banana-like fragrance. Glossy green foliage. All fine specimens.

36-42 in. ht.	B&B XXX	\$ 3.00	\$ 2.50
42-48 in. ht.	B&B XXX	4.00	3.25
42-48 in. ht.	B&B XXXX	5.50	4.50
48-54 in. ht.	B&B XXX	5.50	4.50
48-54 in. ht.	B&B XXXX	7.50	6.00
54-60 in. ht.	B&B XXX	7.50	6.00
54-60 in. ht.	B&B XXXX	10.00	8.00



MYRTLE

Dwarf Compact Myrtus, a very rich evergreen shrub with spicy scented foliage.

DWARF COMPACT

Myrtus communis compacta

Has fine dark green foliage, low branches, with small white flowers in Summer season. Attractive low shrub.

		Price Ea. Less Car lots	Price Ea. In Car lots
9-12 in. sprd.	B&B XX	\$.70	\$.60
12-15 in. sprd.	B&B XX	.95	.80
12-15 in. sprd.	B&B XXX	1.25	1.00
15-18 in. sprd.	B&B XX	1.25	1.00
15-18 in. sprd.	B&B XXX	1.70	1.30
18-24 in. sprd.	B&B XX	1.70	1.30
18-24 in. sprd.	B&B XXX	2.30	1.80
24-30 in. sprd.	B&B XX	2.30	1.80
24-30 in. sprd.	B&B XXX	3.00	

VARIEGATED ROMAN

Myrtus communis variegata

Yellow variegated foliage of this shrub makes a bright spot in any mass of dark green shrubbery.

15-18 in. sprd	B&B XX	\$ 1.30	\$ 1.00
18-24 in. sprd.	B&B XX	1.60	1.30
18-24 in. sprd.	B&B XXX	2.00	1.60
24-30 in. sprd.	B&B XX	2.00	1.60
24-30 in. sprd.	B&B XXX	2.50	2.10
30-36 in. sprd.	B&B XX	2.50	2.10

MYRTLE (Cont.)

ROSEMARY

Myrtus communis microphylla

Light green leaves, very small, more upright in growth. Excellent in foundation plantings.

		Price	
		Ea. Less	Price
		Car lots	Ea. In
			Car lots
12-18 in. sprd.	B&B XX	\$.65	\$.55
18-24 in. sprd.	B&B XX	.80	.70
18-24 in. sprd.	B&B XXX	1.10	.90
24-30 in. sprd.	B&B XX	1.10	.90
24-30 in. sprd.	B&B XXX	1.30	1.10

TRUE

Myrtus communis

Rich green foliage, very closely branched, more upright growth.

24-30 in. ht.	B&B XX	\$ 1.00	\$.80
24-30 in. ht.	B&B XXX	1.30	1.00
30-36 in. ht.	B&B XX	1.25	1.00
30-36 in. ht.	B&B XXX	1.50	1.25
3- 4 ft. ht.	B&B XX	2.00	1.50

NANDINA

JAPANESE

Nandina domestica

We offer the finest block of bushy shrubs ever produced, very bright red color, filled with bunches of scarlet berries. Our stock does not defoliate or shed its berries when Balled and Burlapped from our heavy soil. They can be held for days out of the ground in perfect shape.

Height	No. of Stems				
9-12 in.	1 to 2	B&B XX	\$.35	\$.30
12-15 in.	2 to 3	B&B XX	.50		.40
12-15 in.	2 to 4	B&B XXX	.65		.50
15-18 in.	3 to 5	B&B XX	.65		.50
15-18 in.	4 to 6	B&B XXX	.85		.65
18-24 in.	3 to 5	B&B XX	.85		.65
18-24 in.	4 to 6	B&B XXX	1.20		.85
24-30 in.	3 to 5	B&B XX	1.20		.85
24-30 in.	6 to 10	B&B XXX	1.75		1.20
30-36 in.	3 to 5	B&B XX	1.75		1.20
30-36 in.	6 to 10	B&B XXX	2.30		1.60
3- 4 ft.	3 to 5	B&B XX	2.30		1.60
3- 4 ft.	6 to 10	B&B XXX	3.40		2.40



Japanese Nandina with its brilliant red foliage and attractive red berries.

OLEANDER

OLEANDER DOUBLE WHITE CREAM-RED CENTER

Nerium alba *Nerium variegata*

Well known shrub with long narrow green leaves, blossoms during Spring, Summer and early Fall.

		Price			
		Ea. Less	Price		
		Car lots	Ea. In		
			Car lots		
3-4 ft.	4 to 6	B&B XX	\$.75	\$.60
4-5 ft.	6 to 8	B&B XX	1.20		.80
5-6 ft.	8 to 10	B&B XX	1.75		1.10
5-6 ft.	12 to 16	B&B XXX	3.40		2.50

PHOTINIA

LOW PHOTINIA

Photinia serrulata

Upright growth, large leaves of dark green, blossoms new growth first red, then fawn, then green.

		Price Ea. Less Car lots	Price Ea. In Car lots
3-4 ft. ht.	B&B XX	\$ 1.50	\$ 1.10
4-5 ft. ht.	B&B XX	2.00	1.45
4-5 ft. ht.	B&B XXX	2.50	1.70
5-6 ft. ht.	B&B XX	2.50	1.70
5-6 ft. ht.	B&B XXX	3.25	2.40

PITTIOSPORUM

TOBIRA (Green)

Pittosporum Tobira

Dense compact shrub with dark green leaves, twisted in rosettes at end of branches. Tiny white flowers, very fragrant.

12-15 in. sprd.	B&B XX	\$ 1.00	\$.80
15-18 in. sprd.	B&B XX	1.40	1.10
18-24 in. sprd.	B&B XX	1.90	1.50
18-24 in. sprd.	B&B XXX	2.50	2.00
24-30 in. sprd.	B&B XX	2.50	2.00
24-30 in. sprd.	B&B XXX	3.50	2.75
30-36 in. sprd.	B&B XX	3.50	2.75

WHITESPOT

Pittosporum tobira variegata

Compact spreading growth with light silver-margined foliage, contrasting with green.

9-12 in. sprd.	B&B XX	\$ 1.00	\$.80
12-15 in. sprd.	B&B XX	1.40	1.10
12-15 in. sprd.	B&B XXX	2.00	1.50
15-18 in. sprd.	B&B XX	2.00	1.50

PODOCARPUS

JAPANESE

Podocarpus Macki

Often referred to as "Japanese Yew". Slender medium size with soft green foliage, blue-black berries in Winter. Long tapering leaves.

MACROPHYLLA

Podocarpus Nagi

Similar to above except leaves are broader and more compact growing.

18-24 in. ht.	B&B XX	\$.90	\$.75
24-30 in. ht.	B&B XX	1.40	1.00
30-36 in. ht.	B&B XX	2.10	1.40
3- 4 ft. ht.	B&B XX	3.00	2.00
3- 4 ft. ht.	B&B XXX	4.00	3.00
4- 5 ft. ht.	B&B XX	4.00	3.00
4- 5 ft. ht.	B&B XXX	5.25	4.00
5- 6 ft. ht.	B&B XX	5.25	4.00
5- 6 ft. ht.	B&B XXX	6.75	5.50

POMEGRANATE

DWARF FLOWERING

Punica granatum nana

A very dwarf type of Pomegranate, rich orange flowers, very delicate and almost evergreen.

9-12 in. ht.	B&B XX	\$.75	\$.60
15-18 in. ht.	B&B XX	1.20	.90
18-24 in. ht.	B&B XX	1.75	1.25

PURPLELEAF PLUM

PURPLELEAF

Prunus pissardi

Very graceful upright growth with reddish-purple foliage. Medium size red acid fruit.

4-5 ft. ht.	B&B XX	\$ 1.10	\$.90
5-6 ft. ht.	B&B XX	1.35	1.10
6-7 ft. ht.	B&B XX	1.75	1.50
7-8 ft. ht.	B&B XX	2.50	2.00

SENISA**SILVERLEAF****Leucophyllum texanum**

Small oval leaves, ash-gray or silver color. Has a profusion of orchid flowers borne after rainy weather. Nursery grown stock.

		Price Ea. Less Car lots	Price Ea. In Car lots
18-24 in. ht.	B&B XX	\$ 1.30	\$ 1.00
24-30 in. ht.	B&B XX	1.50	1.20
24-30 in. ht.	B&B XXX	2.00	1.60
30-36 in. ht.	B&B XX	2.00	1.60
30-36 in. ht.	B&B XXX	2.75	2.25
3- 4 ft. ht.	B&B XX	2.75	2.25
3- 4 ft. ht.	B&B XXX	3.50	

SPIREA**ANTHONY WATERER****Spirea bumalda**

Low growing light green foliage, bearing a profusion of purplish-pink flowers all Spring and Summer.

THUNBERG**Spirea thunbergi**

Light green foliage, tiny pure white flowers borne in early Spring. Very attractive shrub, almost evergreen.

12-15 in. ht.	B&B XX	\$.50	\$.40
15-18 in. ht.	B&B XX	.60	.50
18-24 in. ht.	B&B XX	.75	.65
24-30 in. ht.	B&B XX	1.00	.75

VIBURNUM**DWARF SWEET****Viburnum odoratissimum nana**

Very rich dark glossy green foliage. Very compact slightly upright habit of growth. Tiny white flowers in early Spring. Most hardy type of this variety.

24-30 in. ht.	B&B XX	\$ 1.50	\$ 1.10
24-30 in. ht.	B&B XXX	2.00	1.25
30-36 in. ht.	B&B XX	2.00	1.25
30-36 in. ht.	B&B XXX	2.50	1.75
3- 4 ft. ht.	B&B XX	2.50	1.75
3- 4 ft. ht.	B&B XXX	3.50	2.50
4- 5 ft. ht.	B&B XX	3.50	2.50
4- 5 ft. ht.	B&B XXX	4.50	3.50
5- 6 ft. ht.	B&B XX	4.50	3.50
5- 6 ft. ht.	B&B XXX	6.00	4.75

CONIFEROUS EVERGREENS

The Needle-leaved and cone-bearing trees, including many varieties which are the Arborvitae, Cypress, Cedar, Juniper and Pine. Of this group, we offer the most valuable species for the general Landscape plantings in the Southwest. These vary in manner of growth, color and effects, and valuable to the creation of beauty in plantings.

ARBORVITAE

(Biota) *Thuja orientalis*

BERCKMAN'S GOLDEN**T. or. aurea nana**

Very compact growth, rich golden-tipped foliage.

BONITA "GLOBE"**T. or. bonita**

Beautiful rich green color, rounded or globe shape.

MINUTE**T. or. miniature**

As its name implies, it is a dwarf, slowing growth. Dark rich green foliage.

18-24 in. ht.	B&B XX	\$.85	\$.75
24-30 in. ht.	B&B XX	1.00	.90
30-36 in. ht.	B&B XX	1.15	1.00
30-36 in. ht.	B&B XXX	1.50	1.15
36-42 in. ht.	B&B XX	1.50	1.15
36-42 in. ht.	B&B XXX	1.80	1.40

ARBORVITAE (Cont.)

		Price Ea. Less Car lots	Price Ea. In Car lots
42-48 in. ht.	B&B XX	\$ 1.80	\$ 1.40
42-48 in. ht.	B&B XXX	2.50	2.00
4- 5 ft. ht.	B&B XX	2.50	2.00
4- 5 ft. ht.	B&B XXX	3.10	2.60
5- 6 ft. ht.	B&B XX	3.75	3.00

EXCELSIOR**T. or. excelsior**

Very soft light green, lacy foliage, uniform medium growth, very attractive.

4-5 ft. ht.	B&B XX	\$ 2.50	\$ 2.00
4-5 ft. ht.	B&B XXX	3.10	2.60
5-6 ft. ht.	B&B XX	3.75	3.00

BAKER'S PYRAMID**T. or. pyramidalis bakerii**

Tall growing pyramid, intense coloring of light green.

PYRAMID, NEW NUMBERS**T. or. pyramidalis**

Fine new pyramids varying in color and shape. All of good quality and unusual merits.

4-5 ft. ht.	B&B XX	\$.95	\$.80
4-5 ft. ht.	B&B XXX	1.20	.95
5-6 ft. ht.	B&B XX	1.20	.95
5-6 ft. ht.	B&B XXX	1.50	1.20
6-7 ft. ht.	B&B XX	1.50	1.20
6-7 ft. ht.	B&B XXX	2.00	1.60
7-8 ft. ht.	B&B XX	2.00	1.60
7-8 ft. ht.	B&B XXX	3.00	2.50

DAILY DWARF**T. or. daly nana**

Unique pointed shape with compact light green foliage, tinted with yellow shadings.

MELDENSIS**T. or. meldensis**

Attractive dark green, light shadings, medium growth.

COMPACT NEW NUMBERS**T. or. compacta**

Group of choice compact growing types, varying in color and foliage. All good, individual merits.

4-5 ft. ht.	B&B XX	\$.95	\$.80
4-5 ft. ht.	B&B XXX	1.20	.95
5-6 ft. ht.	B&B XX	1.20	.95
5-6 ft. ht.	B&B XXX	1.50	1.20
6-7 ft. ht.	B&B XX	1.50	1.20
6-7 ft. ht.	B&B XXX	2.00	1.75

SIKES**T. or. sikesi**

A new tall, fast growing, bright green with yellow shadings. Fills the columnar narrow planting places.

7- 8 ft. ht.	B&B XX	\$ 2.10	\$ 1.60
8-10 ft. ht.	B&B XX	2.75	2.10

BEVERLY GOLDEN**T. or. beverlyensis**

Tall upright growth, new foliage has golden yellow color.

CALIFORNIA GOLDEN**T. or. conspicua**

Golden foliage, especially attractive in Winter seasons.

CHINESE SEEDLINGS**T. or. sinensis**

Can be furnished in either green or yellow varieties.

YELLOW COLUMN**T. or. elegantissima**

Foliage yellow-green overcast with golden tips of yellow.

5- 6 ft. ht.	B&B XX	\$ 1.00	\$.80
6- 7 ft. ht.	B&B XX	1.15	.90
6- 7 ft. ht.	B&B XXX	1.60	1.10
7- 8 ft. ht.	B&B XX	1.60	1.10
7- 8 ft. ht.	B&B XXX	2.00	1.50
8-10 ft. ht.	B&B XX	2.00	1.50
10-12 ft. ht.	B&B XX	3.00	2.25

GOLDSPIRE (TRUE)**T. or. aurea conspicua**

The True selected type grafted stock. The outstanding golden, especially adapted to prominent areas.

MAURINE (No. 18)**T. or. maurineana**

Formerly sold as No. 18, one of our own origination of unusual merit. Tall dark green foliage, columnar type.

ARBORVITAE (Cont.)



Specimen Ramsey Hybrid Pyramid in formal plantings.

RAMSEY HYBRID *T. or. cupressifolia fastigiata*

Threadlike foliage, rich green color; broad at base, tapering to tall slender top. New growth has soft blue shadings. Uniform in growth, very attractive for pyramid specimens.

WINTERGREEN *T. or. Wintergreen*

This one type retains its rich green color throughout the Winter, does not discolor like common types. Very hardy and desirable for many purposes.

		Price Ea. Less Car lots	Price Ea. In Car lots
5- 6 ft. ht.	B&B XX	\$ 1.80	\$ 1.20
6- 7 ft. ht.	B&B XX	2.25	1.50
6- 7 ft. ht.	B&B XXX	3.00	2.25
7- 8 ft. ht.	B&B XX	3.00	2.25
7- 8 ft. ht.	B&B XXX	4.00	3.00
8-10 ft. ht.	B&B XX	4.00	3.00
8-10 ft. ht.	B&B XXX	6.00	4.50
10-12 ft. ht.	B&B XX	6.00	4.50
10-12 ft. ht.	B&B XXX	8.00	6.50
12-14 ft. ht.	B&B XX	8.00	6.50

LARGER SPECIMENS WILL BE QUOTED ON REQUEST!

CEDARS**CEDAR DEORAR** *Cedrus deodara*

Large growing evergreen, foliage silvery-gray with gracefully weeping branches.

4- 5 ft. ht.	B&B XX	\$ 2.85	\$ 2.30
5- 6 ft. ht.	B&B XX	3.75	3.00
6- 7 ft. ht.	B&B XX	5.25	4.20
7- 8 ft. ht.	B&B XX	6.75	5.40
8-10 ft. ht.	B&B XX	8.60	6.90
10-12 ft. ht.	B&B XX	10.10	8.10

CYPRESS**BHUTAN** *Cupressus torulosa majestica*

Yet quite new to the public. A vigorous grower, dark green color with yellowish cast to new growth, foliage drooping or weeping effect.

5- 6 ft. ht.	B&B XX	\$ 1.75	\$ 1.25
6- 7 ft. ht.	B&B XX	2.50	1.75
6- 7 ft. ht.	B&B XXX	3.50	2.50
7- 8 ft. ht.	B&B XX	3.50	2.50
7- 8 ft. ht.	B&B XXX	4.50	3.50
8-10 ft. ht.	B&B XX	4.50	3.50
8-10 ft. ht.	B&B XXX	6.50	5.00
10-12 ft. ht.	B&B XX	6.50	5.00

CYPRESS (Cont.)

GRIFFING'S HORIZONTAL *Cupressus horizontalis*

This type we have selected of unusual merit, uniform growth and color and true-to-type grafted stock. The parent trees are beautiful specimens, and never affected with any disease or blight.

		Price Ea. Less Car lots	Price Ea. In Car lots
4- 5 ft. ht.	B&B XX	\$ 1.90	\$ 1.50
5- 6 ft. ht.	B&B XX	2.50	2.00
6- 7 ft. ht.	B&B XX	3.25	2.50
7- 8 ft. ht.	B&B XX	4.50	3.50
8-10 ft. ht.	B&B XX	6.00	4.75

ROYAL ITALIAN *Cupressus sempervirens fastigiata*

This tall, narrow Evergreen, straight and columnar is one of outstanding merit. Its dark green shaft rising above the Shrubbery gives a varied skyline. This type of selected strain is compact and vigorous in growth.

SIKES ITALIAN *Cupressus sempervirens sikesi*

This new type of Cypress is a very choice type, very narrow, slender uniform growth.

6- 7 ft. ht.	B&B XX	\$ 3.30	\$ 2.70
7- 8 ft. ht.	B&B XX	4.10	3.30
8-10 ft. ht.	B&B XX	5.60	4.50
10-12 ft. ht.	B&B XX	7.40	6.00
10-12 ft. ht.	B&B XXX	9.25	7.50
12-14 ft. ht.	B&B XX	12.50	8.40
12-14 ft. ht.	B&B XXX	15.60	10.50
14-16 ft. ht.	B&B XX	14.25	11.40
14-16 ft. ht.	B&B XXX	17.80	14.25

BOXED SPECIMENS offered, write for Special prices up to 25 ft.

JUNIPERS

We particularly call attention to the long list of fine varieties of Juniper which we offer, a collection of the most choice types for the Southwest.

ASHFORD *Juniperus communis ashfordi*

A columnar type with spreading branches, dark green foliage with purplish cast in the Winter season.

ENGLISH *Juniperus communis*

Columnar type with horizontal open branches, dark green.

IRISH *Juniperus communis hibernica*

Upright growth, dark green foliage, light green shadings.

24-30 in. ht.	B&B XX	\$.60	\$.50
30-36 in. ht.	B&B XX80	.60
30-36 in. ht.	B&B XXX	1.00	.70
3- 4 ft. ht.	B&B XX	1.00	.70
3- 4 ft. ht.	B&B XXX	1.30	.90
4- 5 ft. ht.	B&B XX	1.30	.90

CANNART REDCEDAR *Juniperus virginiana cannarti*

A deep, very rich green foliage, slightly tufted, retaining its richness the year 'round. Withstands all conditions of weather without injury.

SCHOTTI REDCEDAR *Juniperus virginiana schotti*

Very attractive dark green tufted foliage, heavily branched and sturdy. Very hardy and drought resisting.

6- 7 ft. ht.	B&B XX	\$ 5.60	\$ 4.75
6- 7 ft. ht.	B&B XXX	7.00	5.60
7- 8 ft. ht.	B&B XX	7.00	5.60
7- 8 ft. ht.	B&B XXX	8.50	7.00
8- 9 ft. ht.	B&B XX	8.50	7.00
8- 9 ft. ht.	B&B XXX	11.00	9.00
9-10 ft. ht.	B&B XX	11.00	9.00

JUNIPERS (Cont.)



This block shows only a part of the Pfitzer Junipers we offer this season in heavily branched, well filled stock.

PFITZER JUNIPER *Juniperus chinensis Pfitzeriana*

The most used spreading Juniper, low growing, blue-green plume like foliage. Our stock is well trained, well filled-in and compact growth. These plants will fill the most exacting requirements.

		Price Ea. Less Car lots	Price Ea. In Car lots
15-18 in. sprd.	B&B XX	\$.70	\$.60
15-18 in. sprd.	B&B XXX	.85	.75
18-24 in. sprd.	B&B XX	.85	.75
18-24 in. sprd.	B&B XXX	1.20	.90
24-30 in. sprd.	B&B XX	1.20	.90
24-30 in. sprd.	B&B XXX	1.60	1.15
30-36 in. sprd.	B&B XX	1.60	1.15
30-36 in. sprd.	B&B XXX	2.25	1.50
36-42 in. sprd.	B&B XX	2.25	1.50
36-42 in. sprd.	B&B XXX	2.80	1.90
42-48 in. sprd.	B&B XX	2.80	1.90
42-48 in. sprd.	B&B XXX	3.60	2.40
4- 5 ft. sprd.	B&B XX	3.60	2.40
4- 5 ft. sprd.	B&B XXX	4.50	3.40
5- 6 ft. sprd.	B&B XX	4.50	3.40
5- 6 ft. sprd.	B&B XXX	5.75	4.50

GOLDTIP REDCEDAR *Juniperus vir. elegantissima*

Foliage rich green with yellow colored tips. Branches slightly drooping, very striking.

36-42 in. sprd.	B&B XX	\$.2.25	\$.1.50
42-48 in. sprd.	B&B XX	2.75	2.00
42-48 in. sprd.	B&B XXX	3.50	2.50
4- 5 ft. sprd.	B&B XX	3.50	2.50
4- 5 ft. sprd.	B&B XXX	4.50	3.25

HILL'S DUNDEE *Juniperus vir. pyramidalis hilli*

"Black Hill", of medium height, deep rich green color, very very hardy and attractive. Its foliage is tufted, dark green coloring to purplish-bronze in cold Winter weather.

6- 7 ft. ht.	B&B XX	\$.4.00	\$.3.00
7- 8 ft. ht.	B&B XX	4.75	3.75
7- 8 ft. ht.	B&B XXX	6.00	4.50
8-10 ft. ht.	B&B XX	6.00	4.50
8-10 ft. ht.	B&B XXX	7.50	6.00

JUNIPERS (Cont.)

JAPANESE "Gray Carpet" juniperus chi. procumbens

Fine creeping Juniper, making a dense mat of blue-green, clinging closely to the ground.

		Price Ea. Less Car lots	Price Ea. In Car lots
12-18 in. sprd.	B&B XX	\$ 1.10	\$.90
24-30 in. sprd.	B&B XX	1.75	1.50
24-30 in. sprd.	B&B XXX	2.25	1.80
30-36 in. sprd.	B&B XX	2.55	2.05
30-36 in. sprd.	B&B XXX	3.20	2.50

FOUNTAIN REDCEDAR

Juniperus virginiana tripartita

Dark green foliage with glaucous tips, branching regularly. Very low spreading type.

KOSTER'S REDCEDAR Juniperus virginiana kosteri

Another rich green horizontal branching, low type.

PROSTRATE CANADA Juniperus canadensis depressa

Low spreading habit, foliage light green with feathery appearance.

SAVIN

Juniperus sabina

Rich green color, withstands drouth and arid heat.

15-18 in. sprd.	B&B XX	\$.50	\$.40
15-18 in. sprd.	B&B XXX	.60	.50
18-24 in. sprd.	B&B XX	.60	.50
18-24 in. sprd.	B&B XXX	.75	.60
24-30 in. sprd.	B&B XX	.75	.60
24-30 in. sprd.	B&B XXX	1.00	.75
30-36 in. sprd.	B&B XX	1.00	.75
30-36 in. sprd.	B&B XXX	1.30	1.00
36-42 in. sprd.	B&B XX	1.30	1.00
36-42 in. sprd.	B&B XXX	1.70	1.40
42-48 in. sprd.	B&B XX	1.70	1.40
42-48 in. sprd.	B&B XXX	2.50	2.00

DWARF BLUE CHINESE Juniperus chi. virdifolia

Medium height, beautiful blue-green foliage. The finest type Juniper now on the market, uniform compact pyramid.

24-30 in. ht.	B&B XX	\$ 2.25	\$ 1.75
30-36 in. ht.	B&B XX	3.00	2.50
30-36 in. ht.	B&B XXX	4.50	3.50
36-42 in. ht.	B&B XX	4.00	3.50
36-42 in. ht.	B&B XXX	5.25	4.25
42-48 in. ht.	B&B XX	5.25	4.25
42-48 in. ht.	B&B XXX	6.50	5.25
4- 5 ft. ht.	B&B XX	6.50	5.25
4- 5 ft. ht.	B&B XXX	8.50	7.00
5- 6 ft. ht.	B&B XX	8.50	7.00
5- 6 ft. ht.	B&B XXX	11.00	9.00

CHINESE (Mayhew) Juniperus chi. fastigiata

Pyramid, dark green, light green shadings.

GREEN COLUMN CHINESE Juniperus columnaris

Close growing, rich green, retaining color all Winter.

MASCULA Juniperus chinensis mascula

Holds dark green color all Winter. Very hardy.

5-6 ft. ht.	B&B XX	\$ 2.00	\$ 1.50
6-7 ft. ht.	B&B XX	2.50	2.00
7-8 ft. ht.	B&B XX	3.00	2.50

NUMBER 102 Juniperus chi. nana compacta

Low dwarf growing, vase shape, light green fine foliage.

NUMBER 103 Juniperus chi. nana depressa

Irregular in outline, dark green, dwarf compact upright growth.

24-30 in. ht.	B&B XX	\$ 2.25	\$ 1.80
30-36 in. ht.	B&B XX	3.00	2.50
30-36 in. ht.	B&B XXX	4.00	3.25
36-42 in. ht.	B&B XX	4.00	3.25
36-42 in. ht.	B&B XXX	5.25	4.25

JUNIPERS (Cont.)

REDCEDAR (Natural growth) *Juniperus virginiana* Hardy, native Evergreen, thrives under all conditions.

		Price Ea. Less Car lots	Price Ea. In Car lots
8-10 ft. ht.	B&B XX	\$ 4.00	\$ 3.00
10-12 ft. ht.	B&B XX	5.00	4.00
12-14 ft. ht.	B&B XX	7.00	5.50
14-16 ft. ht.	B&B XX	9.00	7.00
14-16 ft. ht.	B&B XXX	15.00	12.00

BOXED SPECIMENS offered, write for Special prices.

SILVER REDCEDAR "Blue Cedar"

Juniperus vir. glauca

Beautiful silvery blue color. Fine quality Specimens, grafted on sturdy Juniper understood, offered at attractive prices for such values. Slightly pruned for compactness, however with regular lateral branches.

4- 5 ft. ht.	B&B XX	\$ 1.75	\$ 1.25
5- 6 ft. ht.	B&B XX	2.25	1.50
6- 7 ft. ht.	B&B XX	3.00	2.00
6- 7 ft. ht.	B&B XXX	3.75	2.75
7- 8 ft. ht.	B&B XX	3.75	2.75
7- 8 ft. ht.	B&B XXX	4.75	3.50
8-10 ft. ht.	B&B XX	4.75	3.50
8-10 ft. ht.	B&B XXX	6.00	4.50
10-12 ft. ht.	B&B XX	6.00	4.50

SYLVESTER "Japanese" *Juniperus chinensis femina*

Sometimes called "Reeves". A very attractive unique pyramid most adaptable to the Southwest. Has sideling effect, sprangled upright branches, foliage light green, older foliage deeper rich green, new tips blue-green cast. Very hardy and withstands drouth, heat and cold without harm or injury.

4- 5 ft. ht.	B&B XX	\$ 1.80	\$ 1.25
5- 6 ft. ht.	B&B XX	2.25	1.50
5- 6 ft. ht.	B&B XXX	2.80	1.75
6- 7 ft. ht.	B&B XX	2.80	1.75
6- 7 ft. ht.	B&B XXX	3.75	2.50
7- 8 ft. ht.	B&B XX	3.75	2.50
7- 8 ft. ht.	B&B XXX	4.75	3.25
8-10 ft. ht.	B&B XX	4.75	3.25
8-10 ft. ht.	B&B XXX	6.50	4.50
10-12 ft. ht.	B&B XX	6.50	4.50
10-12 ft. ht.	B&B XXX	8.00	6.00

SPINY GREEK (Stricta) *Juniperus excelsa stricta*

Closely branched with densely clothed grayish-green glaucous foliage. Nicely shaped, compact plants.

WHITELEAF CHINESE *Juniperus chi. albovariegata*

The striking contrast of foliage, background similar to Spiny Greek, tipped with white or yellowish spots, makes this new type very outstanding.

18-24 in. ht.	B&B XX	\$.80	\$.70
24-30 in. ht.	B&B XX	1.00	.80
30-36 in. ht.	B&B XX	1.25	1.10
30-36 in. ht.	B&B XXX	1.75	1.40
36-42 in. ht.	B&B XX	1.75	1.40
36-42 in. ht.	B&B XXX	2.50	1.80
42-48 in. ht.	B&B XX	2.50	1.80
42-48 in. ht.	B&B XXX	3.25	2.50
4- 5 ft. ht.	B&B XX	3.25	2.50
4- 5 ft. ht.	B&B XXX	4.40	3.50
5- 6 ft. ht.	B&B XX	4.40	3.50
5- 6 ft. ht.	B&B XXX	5.50	4.00

PINES

ITALIAN STONE

Low growing, deep green foliage, tinted with glaucous new tender tips.

Pinus pinea

LOBLOLLY

Medium growing tree, long needle branches.

Pinus taeda

PINES (Cont.)

LONGLEAF

Pinus palustris

Native of East Texas, makes very tall tree, extra long pine needles, always green.

SHORTLEAF

Pinus echinata

Also native, but moderate growth, short rich green needles.

			Price Ea. Less Car lots	Price Ea. In Car lots
3-4 ft. ht.	B&B XX	\$ 2.10	\$ 1.40
4-5 ft. ht.	B&B XX	2.40	1.60
5-6 ft. ht.	B&B XX	3.00	2.00
6-7 ft. ht.	B&B XX	3.60	2.40
6-7 ft. ht.	B&B XXX	4.50	3.00
7-8 ft. ht.	B&B XX	5.50	4.00

RETINOSPORA

CEDAR

Retinospora thyoides ericoides

A very attractive pyramid, feathery, blue-green foliage, changing to a purplish-bronze in the winter season. Holds up well in boxes or urns.

3-4 ft. ht.	B&B XX	\$ 1.00	\$.75
4-5 ft. ht.	B&B XX	1.40	1.10
5-6 ft. ht.	B&B XX	2.00	1.50
6-7 ft. ht.	B&B XX	2.75	2.00

PALMS

We are offering here the most hardy types of the Palms, which we recommend planting along the upper Gulf Coast of Texas, Louisiana and Mississippi.

BLACKBURN PALMETTO

Sabal blackburniana

Has a large fan leaf, green trunk, very outstanding and pretty. This is a native of the South.

Caliper

7- 8 ft. ht.	12-18"	B&B XX	..\$ 9.60	\$ 6.40
8-10 ft. ht.	16-20"	B&B XX	.. 12.00	8.00

FOR TRUNKS over 2 ft. high, add \$1.00 per ft. extra.

PINDO

Cocos australis

Has long drooping, date shaped leaves of a blue-green color; very attractive tropical type, however very hardy.

Caliper

25-30 in. ht.	2 1/2- 3"	B&B XX	\$ 1.25	\$.90
30-36 in. ht.	3 - 4"	B&B XX	1.80	1.20
36-42 in. ht.	4 - 5"	B&B XX	2.40	1.60
42-48 in. ht.	5 - 6"	B&B XX	3.00	2.00
48-54 in. ht.	6 - 9"	B&B XX	3.60	2.40
48-54 in. ht.	6 - 9"	B&B XXX	4.50	3.25
54-60 in. ht.	9 -12"	B&B XX	4.50	3.25
54-60 in. ht.	9 -12"	B&B XXX	6.00	4.50
5- 6 ft. ht.	12 -15"	B&B XX	6.00	4.50
5- 6 ft. ht.	12 -15"	B&B XXX	8.00	6.00

LARGER SPECIMENS will be quoted upon request!

WINDMILL "Chamaerops"

Trachycarpus excelsa

Trunk very slender cover with brown filament, and fan shape dark green leaves. Distinctive quivering of leaves reminds one of its namesake—a Windmill. Very hardy and attractive for tropical effects.

24-30 in. ht.	B&B XX	\$ 2.10	\$ 1.70
30-36 in. ht.	B&B XX	3.15	2.25
36-42 in. ht.	B&B XX	4.20	3.00
42-48 in. ht.	B&B XX	5.25	3.75
42-48 in. ht.	B&B XXX	6.50	4.75
48-54 in. ht.	B&B XX	6.50	4.75
48-54 in. ht.	B&B XXX	8.00	6.50
54-60 in. ht.	B&B XX	8.00	6.50
54-60 in. ht.	B&B XXX	10.50	8.00
5- 6 ft. ht.	B&B XX	11.50	9.00
5- 6 ft. ht.	B&B XXX	14.00	10.50

BAMBOOS GRASSES, & YUCCA

This group includes some of the varieties of desert plants which grow and thrive in the Southwest and Gulf areas.

BAMBOO

- FEATHER** *Bambusa vulgaris*
Large growing, graceful, green foliage and stems.
- GOLDEN** *Bambusa vulgaris aureovariegata*
Stems golden, penciled green. Very attractive.
- NINGALA** *Arundinaria falcata*
Low growing, graceful arching branches.
- SILVERSTRIPE** *B. a. viridistriatasi*
Silver stripe in leaf, otherwise like Feather variety.

GRASSES

- PAMPAS** *Cortaderia argentea*
Beautiful light green foliage, gracefully recurved. Sends up tall silvery plumes which are most distinctive.
- STRIPED EULALIA** *Eulalia japonica variegata*
Has white pin striped lengthwise of the blade.
- ZEBRA** *Miscanthus sinensis zebrianus*
White stripes cross-wise of the blades makes this variety a very noticeable type. Quite attractive and different.

Size Clumps		Price Ea. Less Car lots	Price Ea. In Car lots
Under 4 in.	NB XX	\$.30	\$.25
4- 6 in.	NB XX	.40	.30
6- 9 in.	NB XX	.55	.40
9-12 in.	NB XX	.85	.70
12-18 in.	NB XX	1.30	1.00
4- 6 in.	B&B XX	.60	.50
6- 9 in.	B&B XX	.80	.65
9-12 in.	B&B XX	1.25	1.00
12-18 in.	B&B XX	2.00	1.50

LAWN GRASS

- CARPET GRASS** *Axonopus compressus*
This unexcelled variety of Grass is being used for the finest lawns in the Southwest. A special strain of this grass which we are using thrives in the dense shade as well as in full sun, and has a beautiful green color the year round. For a quick lawn and one with lasting results, we recommend very highly the use of this grass.
For convenience in shipping and in transplanting, we offer pot grown, sturdy clumps.

	Price Ea. Less Car lots	Price Ea. In Car lots
From Small Pots	\$.06	\$.04

YUCCA

- COMMON** *Yucca filamentosa*
Leaves not rigid or stiff, reaching 2 ft. length. Flower stems reach 8 ft. in height.
- CURVELEAF** *Yucca recurvifolia*
Wide leaves droop gracefully. Fine for urns.
- SPANISH DAGGER** *Yucca agrifolia*
This variety has long pointed leaves, similar to a dagger, therefore its name. Quite hardy and attractive.

SOTOL

- SAWTOOTH SOTOL** *Dasyliirion serratifolium*
Long tapering leaves with sawtooth edges. Brilliant rich green, excellent for rockeries or lawns.

18-24 in. sprd.	B&B XX	\$.75	\$.65
24-30 in. sprd.	B&B XX	1.10	.80
30-36 in. sprd.	B&B XX	1.50	1.00

SOTOL (Cont.)



YUCCA

RADIANT

Yucca radiosa

Has medium size head of narrow divergent leaves.

SPANISH BAYONET

Yucca treculeana

Has large trunk and head of dark green leaves, topped in Spring with great truss of creamy white flowers.

			Price Ea. Less Car lots	Price Ea. In Car lots
24-30 in. ht.	B&B XX	\$.80	\$.70
30-36 in. ht.	B&B XX	1.10	.85
3- 4 ft. ht.	B&B XX	1.40	1.00
4- 5 ft. ht.	B&B XX	2.10	1.40
5- 6 ft. ht.	B&B XX	3.00	2.00

RED

Yucca hesperalse parviflora

Dwarf type with narrow toungeed leaves. Red flowers borne on red stems 3-5 ft. in length.

12-18 in. sprd.	B&B XX	\$.60	\$.50
18-24 in. sprd.	B&B XX	1.00	.75

HEDGES

For formal uniform pruned hedges or loosely growing for screens, etc. we recommend many types of the Broadleaf Evergreens, especially Yaupon Holly, which will be quoted upon request; however here we only list the commonly used type.

CHINESE PRIVET (Amur River South)

Ligustrum sinense

Small bright green leaves, rapid growing, withstands shaping or shearing to any shape or design. Evergreen along the Gulf Coast.

12-18 in. ht.	NB XX	\$.03 ½	\$.03
18-24 in. ht.	NB XX05	.04
2- 3 ft. ht.	NB XX08	.06
3- 4 ft. ht.	NB XX10	.07 ½
4- 5 ft. ht.	NB XX14	.10

SHADE and ORNAMENTAL TREES

Nursery-grown Shade and Ornamental Trees for such low prices cannot be duplicated, nor will any give better results. These trees have been regularly trained, cultivated, pruned, irrigated and root-pruned. These trees are sure to live, grow and give immediate results—especially the B&B Trees from our choice Beaumont Balling soil—they live 100% in transplanting.



The Evergreen Live Oak thriving in the great Southwest.

LIVE OAK (Evergreen)

Quercus virginiana

The best rapid growing Evergreen Shade Tree for the Southwest. Always clean, rich green foliage. Very straight bodies and excellent for shade. Trimmed to single stem in center. We have the finest blocks of these in the Country, and can furnish same by the thousands in most any size listed below. Larger specimens will be quoted on request.

Caliper	Approx. Ht.		Price Ea. Less Car lots	Price Ea. In Car lots
1 1/4 - 1 1/2 "	6- 8 ft.	B&B XX ..	\$ 1.70	\$ 1.40
1 1/2 - 1 3/4 "	7- 9 ft.	B&B XX ..	2.10	1.75
1 1/2 - 1 3/4 "	7- 9 ft.	B&B XXX	2.75	2.25
1 3/4 - 2 "	8-10 ft.	B&B XX ..	2.75	2.25
1 3/4 - 2 "	8-10 ft.	B&B XXX	3.60	3.00
2 - 2 1/4 "	9-11 ft.	B&B XX ..	3.60	3.00
2 - 2 1/4 "	9-11 ft.	B&B XXX	4.50	3.75
2 1/4 - 2 1/2 "	10-12 ft.	B&B XX ..	4.50	3.75
2 1/4 - 2 1/2 "	10-12 ft.	B&B XXX	5.25	4.50
2 1/2 - 2 3/4 "	11-13 ft.	B&B XXX	5.25	4.50
2 1/2 - 2 3/4 "	11-13 ft.	B&B XXX	6.00	5.00
2 3/4 - 3 "	12-14 ft.	B&B XX ..	6.00	5.00
2 3/4 - 3 "	12-14 ft.	B&B XXX	7.00	5.75
3 - 3 1/2 "	13-15 ft.	B&B XX ..	7.00	5.75
3 - 3 1/2 "	13-15 ft.	B&B XXX	9.00	7.50
3 1/2 - 4 "	14-16 ft.	B&B XX ..	9.00	7.50
3 1/2 - 4 "	14-16 ft.	B&B XXX	\$11.00	\$ 9.50
4 - 4 1/2 "	15-17 ft.	B&B XX ..	11.00	9.50
4 - 4 1/2 "	15-17 ft.	B&B XXX	14.00	11.00

PIN OAK

Quercus palustris

Symmetrical tree with large forked leaves of a beautiful tone of green, fading to scarlet in Fall.

Caliper	Approx. Ht.		Price Ea. Less Car lots	Price Ea. In Car lots
3 - 3 1/2 "	14-16 ft.	B&B XX ..	\$ 6.00	\$ 4.50
3 1/2 - 4 "	15-17 ft.	B&B XX ..	7.00	5.50
4 - 4 1/2 "	16-18 ft.	B&B XX ..	8.00	7.00
4 1/2 - 5 "	18-20 ft.	B&B XX ..	9.75	8.50
5 - 6 "	20-24 ft.	B&B XX ..	12.00	10.00

SOUTHERN PIN OAK

Quercus nigra

Straight trees with well shaped heads and trunks, long narrow leaves.

WATER OAK

Quercus nigra

Another rapid growing shade tree, uniform trunks.

WILLOW OAK

Quercus phellos

Smooth bark, leaves oblong, turning pale yellow in Fall.

WEeping WILLOW

Salix babylonica

Graceful spreading type, long pendulous branches.

Caliper	Approx. Ht.		Price Ea. Less Car lots	Price Ea. In Car lots
2 -2 1/4"	10-12 ft.	B&B XX	.. \$ 2.50	\$ 2.00
2 1/4 -2 1/2"	11-13 ft.	B&B XX	.. 3.00	2.50
2 1/2 -2 3/4"	12-14 ft.	B&B XX	.. 3.50	3.00
2 3/4 -3 "	13-15 ft.	B&B XX	.. 4.25	3.50
3 -3 1/2"	14-16 ft.	B&B XX	.. 5.00	4.00
3 1/2 -4 "	15-17 ft.	B&B XX	.. 6.25	5.00
4 -4 1/2"	16-18 ft.	B&B XX	.. 8.00	6.50
4 1/2 -5 "	17-19 ft.	B&B XX	.. 10.00	8.00

ARIZONA ASH

Fraxinus velutina

"Evergreen Ash" Straight trunk of grayish color, smooth bark and dark glossy green foliage.

CHINESE ELM

Ulmus pumila

Small glossy green leaves, very irregular in shape of trunk.

CHINESE ELM

Ulmus parvifolia

Small green foliage, rather straight trunks, for arid regions principally.

HACKBERRY (Sugarberry)

Celtis mississippiensis

Medium green leaves, well known in Texas plantings.

SWEET GUM

Liquidambar styraciflua

Maple-like leaves, assuming crimson autumn colors in Fall.

SYCAMORE

Platanus orientalis

(Plane Tree) Very large leaves, which shed in early Fall.

Caliper	Approx. Ht.		Price	Price
1 1/4 -1 1/2"	9-11 ft.	NB XX	.. \$.75	\$.65
1 1/2 -2 "	10-12 ft.	NB XX	.. 1.00	.80
2 -2 1/2"	12-14 ft.	NB XX	.. 1.35	1.10
2 1/2 -3 "	14-16 ft.	NB XX	.. 1.75	1.40
3 -3 1/2"	16-18 ft.	NB XX	.. 2.25	1.75
3 1/2 -4 "	17-19 ft.	NB XX	.. 2.75	2.25
1 1/2 -2 "	10-12 ft.	B&B XX	.. 1.25	1.00
2 -2 1/2"	12-14 ft.	B&B XX	.. 1.50	1.25
2 1/2 -3 "	14-16 ft.	B&B XX	.. 2.00	1.50
3 -3 1/2"	16-18 ft.	B&B XX	.. 2.50	2.00
3 1/2 -4 "	17-19 ft.	B&B XX	.. 3.00	2.50
4 -5 "	20-22 ft.	B&B XX	.. 4.00	3.25

LOMBARDY POPLAR

Populus nigra italica

Very slender, tall growing, excellent for lining drive-ways and in accent plantings.

CHINESE TALLOW

Sapium sebiferum

Dense fast growing semi-tropic tree with small bright green leaves assuming scarlet color in Fall.

Caliper	Approx. Ht.		Price	Price
1 1/2 -2 "	10-12 ft.	B&B XX	.. \$ 1.25	\$ 1.00
2 -2 1/2"	12-14 ft.	B&B XX	.. 1.50	1.25
2 1/2 -3 "	14-16 ft.	B&B XX	.. 2.00	1.50
3 -3 1/2"	16-18 ft.	B&B XX	.. 2.50	1.80
3 1/2 -4 "	17-19 ft.	B&B XX	.. 3.60	2.50

AMERICAN REDBUD (Judas tree)

Cercis canadensis

Purplish red flowers borne along stems before large rounded leaves appear in early Spring.

Caliper	Approx. Ht.		Price	Price
1 -1 1/4"	5- 6 ft.	B&B XX	.. \$ 1.50	\$ 1.25
1 1/4 -1 1/2"	6- 7 ft.	B&B XX	.. 2.00	1.50
1 1/2 -1 3/4"	7- 8 ft.	B&B XX	.. 2.50	2.00
1 3/4 -2 "	8- 9 ft.	B&B XX	.. 3.00	2.50
2 -2 1/4"	9-10 ft.	B&B XX	.. 3.50	3.00
2 1/4 -2 1/2"	10-11 ft.	B&B XX	.. 4.50	3.75

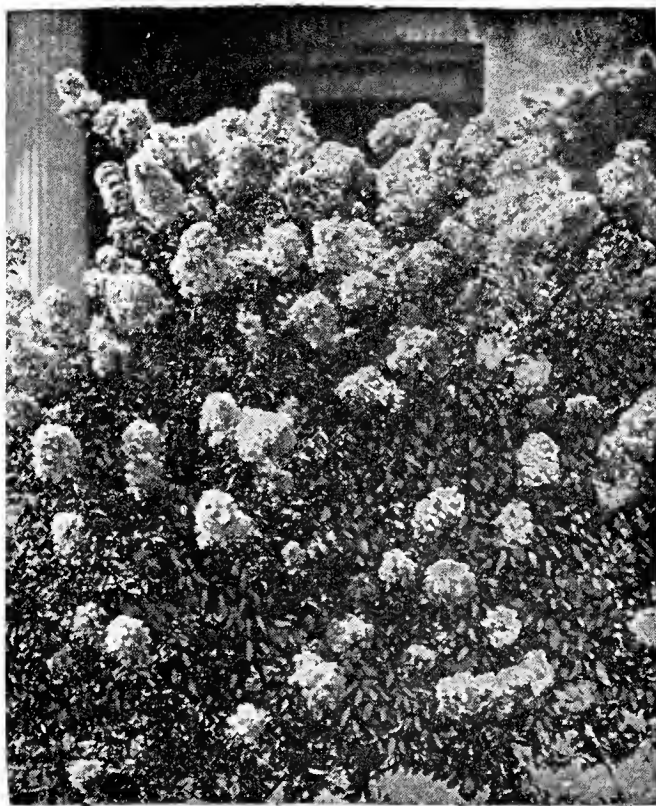
SILK TREE (Mimosa)**Albizia julibrissina**

Acacia-like cut foliage, covered in early Summer with feathery fragrant pink blossoms.

		Price	
		Ea. Less	Price
		Car lots	Ea. In
			Car lots
4- 5 ft. ht.	B&B XX	\$ 1.20	\$ 1.00
5- 6 ft. ht.	B&B XX	1.50	1.25
6- 7 ft. ht.	B&B XX	1.80	1.50
7- 8 ft. ht.	B&B XX	2.60	2.00
8-10 ft. ht.	B&B XX	3.90	3.00

FLOWERING SHRUBS

In this group we offer the most choice types of Flowering deciduous Shrubs for the Southwest, which have been tried and proved their lasting qualities. For masses of brilliant colors, we recommend these hardy types for general plantings, and for best results, use our B&B strong sturdy Specimens.

CRAPE MYRTLE

This is a picture of the true Griffing's Watermelon Red Crape Myrtle. Notice the heavy flower heads.

GRIFFING'S WATERMELON RED**L. i. rubra**

Very rank growth, producing large fluffy flower heads of rich clear bright red color. To brighten up public places, along the Public Highways and in the lawns, thousands of these Strong B&B Crape Myrtles should be planted this Winter to bloom heavy in the Spring of 1936. Centennial Landscaping in Texas cannot be brightened more than by the use of these brilliant watermelon-red colored Flowers.

IMPERIAL PINK**L. i. rosea**

Light pastel shade, upright growth, large clusters of flowers.

MAGENTA**L. i. magenta**

A new reddish-purple color, dark color, very outstanding in group plantings.

PURPLE**L. i. purpurea**

A very clear bright purple color, not the dingy color so common, but very clear and attractive.

LILAC**L. i. lilac**

Light pastel shade of lilac. Very delicate color.

		Price	
		Ea. Less	Price
		Car lots	Ea. In
			Car lots
12-18 in. ht.	NB XX	\$.18	\$.15
18-24 in. ht.	NB XX	.25	.20

CRAPE MYRTLE (Cont.)

		Price Ea. Less Car lots	Price Ea. In Car lots
2- 3 ft. ht.	NB XX	.30	.25
3- 4 ft. ht.	NB XX	.35	.30
4- 5 ft. ht.	NB XX	.45	.35
5- 6 ft. ht.	NB XX	.55	.40
6- 7 ft. ht.	NB XX	.75	.60

PRICE FOR BUSHY TYPES OF THE CRAPE MYRTLE:

2- 3 ft. ht.	B&B XX	\$.60	\$.50
3- 4 ft. ht.	B&B XX	.80	.65
4- 5 ft. ht.	B&B XX	1.10	.90
5- 6 ft. ht.	B&B XX	1.35	1.10
6- 7 ft. ht.	B&B XX	1.75	1.50
7- 8 ft. ht.	B&B XX	2.50	2.00
8-10 ft. ht.	B&B XX	4.50	3.00

PRICE FOR STANDARD OR TREE SHAPE CRAPE MYRTLE:

3- 4 ft. ht.	B&B XX	\$.60	\$.50
4- 5 ft. ht.	B&B XX	.80	.65
5- 6 ft. ht.	B&B XX	1.10	.90
6- 7 ft. ht.	B&B XX	1.35	1.10
7- 8 ft. ht.	B&B XX	1.75	1.50
8-10 ft. ht.	B&B XX	2.50	2.00

DWARF BLUE

L. i. cerulea nana

Distinctive bluish color, dwarf growing type.

WEeping PINK

L. i. prostrata

Weeping effect, low branched with rich pink flowers.

12-18 in. ht.	NB XX	\$.25	\$.20
18-24 in. ht.	NB XX	.30	.25
2- 3 ft. ht.	B&B XX	.80	.65
3- 4 ft. ht.	B&B XX	1.10	.90
4- 5 ft. ht.	B&B XX	1.35	1.10

CHASTE TREE

Vitex agnus castus

Nice shade of green foliage, with lavender or purple flowers.

RED OSIER DOGWOOD

Cornus stolonifera

Of medium growth, showy red stems, and pinkish-white blossoms.

4-5 ft. ht.	B&B XX	\$.10	\$.90
5-6 ft. ht.	B&B XX	1.35	1.10
6-7 ft. ht.	B&B XX	1.75	1.50
7-8 ft. ht.	B&B XX	2.50	2.00

DESMODIUM "Tickclover"

Lespediza bicolor

Sweet scented Fall flowers, purplish-pink and white flowers.

Clumps

4- 6 in. dia.	NB XX	\$.30	\$.25
6- 9 in. dia.	NB XX	.45	.35
4- 6 in. dia.	B&B XX	.70	.60
6- 9 in. dia.	B&B XX	1.10	.90
12-14 in. dia.	B&B XX	1.50	1.20

FLOWERING QUINCE

Cydonia japonica

Covered with bright scarlet flowers in early Spring.

18-24 in. ht.	NB XX	\$.30	\$.20
24-30 in. ht.	NB XX	.40	.30
24-30 in. ht.	B&B XX	1.10	.75
30-36 in. ht.	B&B XX	1.40	1.00
30-36 in. ht.	B&B XXX	1.90	1.25
36-42 in. ht.	B&B XX	2.00	1.50
36-42 in. ht.	B&B XXX	2.50	1.75

HARDY LANTANA

Lantana camara

Rapid growing shrub, orange-yellow blossoms, also purple-yellow. Thrives in all conditions, and blooms all Summer, Fall and early Winter.

18-24 in. ht.	NB XX	\$.25	\$.20
2- 3 ft. ht.	NB XX	.35	.25
18-24 in. ht.	B&B XX	.45	.35
2- 3 ft. ht.	B&B XX	.60	.50
4- 5 ft. ht.	B&B XX	.90	.75

FORSYTHIA "Goldenbell"

Forsythia

Shiny dark green foliage, yellow blossoms early Spring.

WINTER HONEYSUCKLE *Lonicera fragrantissima*

White flowers, very fragrant followed by red and orange berries during the Summer.

TARTARIAN HONEYSUCKLE*Lonicera tartarica rubra*

Upright growing shrub, dark pink or red flowers followed with brightly colored berries.

BILLARDI SPIREA*Spiraea billardi*

Spikes of fluffy bright pink flowers in early Spring.

VAN HOUTTEI SPIREA*Spiraea van houttei*

Tall growing, masses of white flowers in early Spring.

ROSE WEIGELIA*Weigelia amabilis*

Pink-flowered, masses of light rosy pink blooms in early Spring. Very showy.

STELTZMI WEIGELIA*Weigelia steltzmi*

Medium to large shrub, bright colored flowers in Spring.

		Price	
		Ea. Less	Price
		Car lots	Ea. In
			Car lots
12-18 in. ht.	NB XX	\$.20	\$.15
18-24 in. ht.	NB XX	.25	.20
2- 3 ft. ht.	NB XX	.30	.25
18-24 in. ht.	B&B XX	.50	.30
2- 3 ft. ht.	B&B XX	.75	.50

VINES and CREEPERS**ENGLISH IVY***Hedera helix*

Thick leathery leaves, thrives in shade. Evergreen.

FIG VINE*Ficus repens*

Dainty heart-shaped leaves, evergreen creeper. Clings closely to all types of masonry.

ROSA DE MONTANA (Coral Vine)*Antigonon leptopus*

Beautiful climbing vine, rosy pink racemes of flowers in Summer and early Fall season.

STAR JASMINE (Confederate Jasmine)*Trachelospermum*

Rich green leaves with tiny white star shaped flowers, very fragrant.

		Price	
		Ea. Less	Price
		Car lots	Ea. In
			Car lots
From 2 ½ inch pot		\$.20	\$.15
From 3 inch pot		.30	.22
From 4 inch pot		.55	.35
From 5 inch pot		.70	.50
From 6 inch pot		1.00	.75

ROSES

In selecting Roses, our long experience has shown us that many varieties have their merits, however we have tested hundreds of varieties and selected a few BEST ADAPTED for our Southern climate and soil conditions. This list of two or three dozen tested varieties includes a choice of colors and classes.

STANDARD VARIETIES

ANTONINE RIVOIRE. (H. T.) — Beautiful buds, silvery-pink, almost white, opens into flat rose.

CHAS. K. DOUGLASS (H. T.) — Long pointed buds of crimson-scarlet.

COLUMBIA (H. T.) — Bright pink, sweet scented. Stiff petals.

FRANK W. DUNLOP (H. T.) — Long pointed, bright rose-pink, sweetly scented, foliage leathery dark green. Profuse bloomer.

K. A. VICTORIA (H. T.) — Well formed buds opening to magnificent snow-white blooms.

LADY HILLINGDON (T.) — Slender pointed deep saffron yellow, excellent buds. Very dainty cut flowers.

MARY COUNTESS OF ILLCHESTER (H. T.) — Large double, full cupped blooms of rich rose pink.

ROSES (Cont.)

MRS. CHARLES BELL (H. T.) — A Shell-pink Radiance, shading to salmon color.

PINK RADIANCE (H. T.) — Brilliant rose-pink silvery shade. Best ever-bloomer for the Southwest. Fine for cut flower.

RED RADIANCE (H. T.) — Brilliant, deep red; strong buds on strong sturdy stems. Excellent for cut flower.

	Price Ea. Less Car lots	Price Ea. In Car lots
No. 2 - 1 yr. Light Grade NB XX	\$.25	\$.20
No. 1 - 2 yr. Heavy Grade NB XX	.35	.30

**NEW SPECIAL VARIETIES
BUSH ROSES**

EDITH NELLIE PERKINS (H. T.) — Medium size, oriental red shaded cerise-orange, medium stems.

CALEDONIA (H. T.) — Long delicate pure white buds opening to double blooms.

E. G. HILL (H. T.) — Beautiful dark red buds, rich fragrance, free bloomer. Very fine red cut flower.

ETOILE DE HOLLAND (H. T.) — Brilliant red blooms, perfect in half-open buds. Fragrant and free bloomer.

PRESIDENT HOOVER (H. T.) — Light yellow bud, shading to salmon-pink as the buds open.

TALISMAN (H. T.) — Brilliant orange-red blooms, opening to lighter shades of yellow.

DWARF or POLYANTHAS

ELLEN PAULSEN — Medium size, rosy-pink open flowers, not used for cut flowers, but beautiful and lasting on the bush.

EDITH CAVELL — Semi-double brilliant scarlet red flowers, very showy and bright colored.

GOLDEN SALMON — Bright orange-salmon flowers in large clusters.

CECIL-BRUNNER — Sweetheart Rose. Small buds light pink with yellow shadings. Borne in graceful clusters.

GLORIA MUNDI — Fully double, orange-scarlet borne in clusters. Abundant glossy green foliage, upright growth.

IDEAL — Compact grower, small dark scarlet blossoms.

CLIMING ROSES

CL. PINK RADIANCE (CL. H. T.) — Rich pink flowers, very much like the bush variety. Very rank flowering vine.

CL. RED RADIANCE (CL. H. T.) — Large rich red flowers, very thrifty vine and regular bloomer.

CL. COLUMBIA (CL. H. T.) — Large rich pink blossoms, and rank growing vine.

CL. MARSHAL NIEL (Nois) — Golden yellow, deliciously fragrant.

CL. PAUL'S SCARLET (H. W.) — Bright scarlet blooms of excellent shape and size borne in small clusters.

PRICE OF NEW SPECIAL VARIETIES OF ROSES ABOVE:

No. 2 - 1 yr. Light Grade NB XX	\$.50	\$.40
No. 1 - 2 yr. Heavy Grade NB XX	.80	.70

VERY SPECIAL ROSES

AUTUMN (H. T.) — Medium size bud, burnt orange, streaked with red, borne singly on medium length stems.

ROSES (Cont.)

- DAME EDITH HELEN (H.T.)** — Large full bloom, pure glowing pink.
- GOLDEN DAWN (H. T.)** — Bud rich sunflower yellow, flushed of old rose shadings, very fragrant.
- OLYMPIAD (H. T.)** — New red rose, long pointed bud of flame scarlet.
- PATIENCE (H. T.)** — Long pointed medium-sized bud; scarlet-carmine, passing to deep orange at base of bud.
- MARY HART (H. T.)** — Long pointed bud, maroon-red, very double.
- BETTER TIMES (H. T.)** — Very large flowers, bright cerise color.

PRICE OF VERY SPECIAL VARIETIES OF ROSES ABOVE:

	Price Ea. Less Car lots	Price Ea. In Car lots
No. 2 - 1 yr. Light Grade NB XX	\$ 1.00	\$.85
No. 1 - 2 yr. Heavy Grade NB XX	1.60	1.40

FRUIT AND NUT TREES

This group contains the principal varieties of Fruit and Nut trees adaptable to the Southwest.

FIG TREES

- BROWN TURKEY**—Medium to large, yellowish brown fruit.
- CELESTE** — “Little Sugar fig”, very sweet, dark blue fruit.
- MAGNOLIA** — Light colored, excellent for preserving.

12-18 in. ht. NB XX\$.25	\$.18
18-24 in. ht. NB XX35 .25
2- 3 ft. ht. NB XX45 .35
3- 4 ft. ht. NB XX60 .50
4- 5 ft. ht. NB XX	1.10 .75

GRAPE VINES

BUNCH VARIETIES:

- CARMEN** — Medium size, black, firm and tender.
- CONCORD** — Very large, round bluish-black. Early bearer.
- NIAGRA** — Medium size, very sweet, white grape.

MUSCADINE VARIETIES:

- JAMES** — Very large, purplish-black, rich, sweet and juicy.
- MALE MUSCADINE** — Pollinating variety.
- THOMAS** — Medium size, red. Small cluster. Fine quality.
- WHITE SCUPPERNONG** — Large bronze color. Sweet and vinous.

No. 2 - 1 yr. Light Grade NB XX	\$.20	\$.15
No. 1 - 2 yr. Heavy Grade NB XX	.30	.25

PEAR TREES

- GARBER** — Good quality, ripens in September.
- KEIFFER** — Large, well known in the South. Hard, but good for preserving.
- PINEAPPLE** — Excellent for preserving, large and juicy.

2-3 ft. ht. NB XX\$.40	\$.30
3-4 ft. ht. NB XX55 .40

PEAR TREES (Cont.)

			Price Ea. Less Car lots	Price Ea. In Car lots
4-5 ft. ht.	NB XX	\$.65	\$.55
5-6 ft. ht.	NB XX85	.70
6-8 ft. ht.	NB XX	1.25	1.10

PEACH TREES

ANGEL — Freestone. White flesh, juicy, acid. Ripens about September first.

BEST JUNE — Freestone. Light color, red cheek.

CARMEN — Large white flesh with red cheek. Freestone.

CHILOW — Cling. Pure yellow. Very large and regular bearer.

ELBERTA — Freestone. Very large, yellow flesh, red cheek.

GREENSBORO — Cling. Large, bright red. One of the best clings.

HONEY — Freestone. Creamy-white, tinted with red. Very sweet.

IMPERIAL — Freestone. Large oblong, whittish-yellow, washed-red. Of the Honey family.

JEWELL — Freestone. Of the Honey family. Medium size, light yellow. Rich and juicy.

PALLAS — Freestone. Deep red; flesh white. Ripens June 20th.

2-3 ft. ht.	NB XX	\$.40	\$.30
3-4 ft. ht.	NB XX50	.40
4-5 ft. ht.	NB XX65	.55
5-6 ft. ht.	NB XX85	.70
6-8 ft. ht.	NB XX	1.25	1.10

PLUM TREES

BRUCE — Large, red and very productive.

HAPPINESS — Trees handsome, fruit large glowing red.

EXCELSIOR — Large purplish-red. Annual bearer everywhere.

METHLEY — Large greenish-red skin, red flesh. Very sweet.

NONA — Large bright red; flesh yellow.

2-3 ft. ht.	NB XX	\$.40	\$.30
3-4 ft. ht.	NB XX50	.40
4-5 ft. ht.	NB XX65	.55
5-6 ft. ht.	NB XX85	.70
6-8 ft. ht.	NB XX	1.25	1.10

JAPANESE PERSIMMON

TANE NASHI — Best known and most popular variety. Conical. Early bearer and ripens early.

YEMON — Large, tomato shape. Somewhat four sided.

ZENGI — Medium size, dark meat, edible when yet hard. Long life, ever-bearing tree.

2-3 ft. ht.	NB XX	\$.50	\$.40
3-4 ft. ht.	NB XX65	.55
4-5 ft. ht.	NB XX85	.70
5-6 ft. ht.	NB XX	1.25	1.10

PAPER-SHELL PECAN TREES

BRADLEY — Very rich, thin shell, bears early and prolific.

BIG-Z — Very thin shell, rich kernel and largest nut we offer for the Coastal plantings.

CURTIS — Earliest and most prolific bearer. Thin shell and of very rich quality.

PECANS (Cont.)

MONEYMAKER — Early maturing, and heavy producer. Medium nuts.

STUART — Symmetrical growth, regular bearer. Plump nuts.

SUCCESS — Large size. Moderately thin shall; rich quality.

		Price Ea. Less Car lots	Price Ea. In Car lots
3- 4 ft. ht.	NB XX	\$.75	\$.50
4- 5 ft. ht.	NB XX	.90	.60
5- 6 ft. ht.	NB XX	1.20	.80
6- 7 ft. ht.	NB XX	1.50	1.00
7- 8 ft. ht.	NB XX	1.80	1.30
8-10 ft. ht.	NB XX	2.25	1.60

CITRUS FRUIT TREES

All budded on *Citrus trifoliata* under stock.

MARSH SEEDLESS GRAPEFRUIT *Citrus Grandis*
Best and most satisfactory flavor. Mild sweet fruit.

MYER'S LEMON *Citrus limona*
A new variety introduced by the Federal Government, bears young and thrifty fruit of fine flavor.



The Satsuma Orange Tree heavily loaded with fruit being admired by Mr. Griffing is his favorite fruit.

SATSUMA ORANGE *Oonshiu*
Deep rich color, fine grained and tender, very sweet. The most desired Citrus fruit for the Southwest.

WASHINGTON NAVEL ORANGE
The famous California round orange.

Caliper		Price Ea. Less Car lots	Price Ea. In Car lots
3/8 - 1/2"	Low branched B&B XX	\$.65	\$.50
1/2 - 5/8"	Low branched B&B XX	.80	.65
5/8 - 3/4"	Low branched B&B XX	1.00	.80
3/4 - 1"	Low branched B&B XX	1.25	1.00
1 - 1 1/4"	Low branched B&B XX	1.60	1.30
1 1/4 - 1 1/2"	Low branched B&B XX	2.50	2.00

MEIWA KUMQUAT *Fortunella japonica*
Fruit large, nearly round; deep rich yellow. Very sweet and delicious. Bears early and is very productive.

18-24 in. ht.	B&B XX	\$.95	\$.75
24-30 in. ht.	B&B XX	1.65	1.35
24-30 in. ht.	B&B XXX	2.10	1.70
30-36 in. ht.	B&B XX	2.65	2.10
30-36 in. ht.	B&B XXX	3.30	2.60
36-42 in. ht.	B&B XX	3.75	3.00
36-42 in. ht.	B&B XXX	4.70	3.75

INDEX

*Common Name	Name	Page
— A —		
Name		Page
*Abelia		6
*Albizzia		30
*Antignon		30
*Arborvitae		18-20
*Arundinaria		26
*Ash		29
*Axonopus		26
*Azalia		6
— B —		
*Bamboo		26
*Bambusa		26
*Banana Shrub		15
*Barberry		6
*Berberis		6
*Biota		18-20
*Broadleaf Evergreens		6
*Burning Bush		9-10
— C —		
*Camellia		6
*Camphor Tree		7
*Cape Jasmine		7-8
*Cedar		20
*Cedrus		20
*Celtis		29
*Cercis		29
*Chaste Tree		31
*Cinnamonum		7
*Citrus Fruit		36
*Cocos		25
*Coral Vine		32
*Cornus		31
*Cortaderia		26
*Crape Myrtle		30-31
*Creepers		31
*Cupressus		20-21
*Cydonia		31
*Cypress		20-21
— D —		
Dasyliirion		26
Desmodium		31
*Dogwood		31
— E —		
Elaeagnus		8-9
*Elm		29
Eriobotrya		13
Eulalia		26
*Euonymous		9
Evergreens, Broadleaf		6
*Evergreens, Coniferous		18-25
— F —		
Feijoa		10
Ficus		32-34
*Fig Trees		34
*Fig Vine		32
*Firethorn		9
*Forsythia		31
Fortunella		36
Fraxinus		29
*Fruit Trees		34-36
— G —		
*Gardenia		7-8
*Grapefruit		36
*Grasses		26
*Guava		10
*Gum, Sweet		29
— H —		
*Hackberry		29
Hedera		32
*Hedges		27
*Holly		10-12
*Honeysuckle		32
— I —		
Ilex		10-12
*Ivy		32
— J —		
*Jasmine		12
Jasminum		12
*Junipers		21-24
Juniperus		21-24
— K —		
*Kumquats		36
— L —		
*Lantana		31
*Laurel		12
Laurocerasus		12
*Lavender		12
— M —		
*Magnolia		14-15
Mimosa		30
Miscanthus		26
*Myrtle		15-16
Myrtus		15-16
— N —		
*Nandina		16
Nerium		16
*Nut Trees		34-36
— O —		
*Oak Trees		28
*Oleander		16
*Oranges		36
— P —		
Palmetto		25
*Palms		25
*Peach Trees		35
*Pear Trees		34
*Pecan Trees		35
*Persimmon Trees		35
*Photinia		17
*Pine Trees		24-25
Pinus		24-25
*Pittosporum		17
*Pindo Palms		25
*Plane Trees		29
Platanus		29
*Plum, Purpleleaf		17
*Plum Trees		35
Podocarpus		17
*Pomegranate		17
*Poplar Trees		29
Populus		29
*Privet		13-14
Prunus		17
Punica		17
Pyracanthus		9
— Q —		
Quercus		28
*Quince, Flowering		31
— R —		
*Redbud		29
Retinospera		25
*Rosa de Montana		32
*Rosemary		12
*Roses		32-34
— S —		
Sabal		25
Salix		29
Santolina		12
Sapium		29
Senisia		18
*Shrubs, Flowering		30-32
*Silk Tree		30
*Sotol		26
*Spirea		18
*Star Jasmine		32
*Sugarberry		29
*Sycamore Trees		29
— T —		
*Tallow Trees		29
Trachelospermum		32
Trachycarpus		25
*Trees, Nut		35-36
*Trees, Shade and Ornamental		28-30
— U —		
Ulmus		29
— V —		
Viburnum		18
*Vines		32
Vitex		31
— W —		
*Waxleaf Privet		13
*Weigelia		32
*Willow, Weeping		29
*Windmill Palms		25
— Y —		
*Yucca		26

